

TABLE OF CONTENTS

1. System Overview	6
1.1 Description	6
1.2 Specifications.....	9
1.3 Customer supplied items:.....	10
1.4 Operating Overview	11
2. Condensed Operating Procedure	16
2.1 Introduction	16
2.2 Operational Steps.....	16
3. Initial Setup.....	19
3.1 Connections	19
3.2 System Test.....	26
3.3 Tests with the Cell Simulator	29
4. Databases	31
4.1 Navigation.....	31
4.2 Batteries.....	31
4.3 Customers	34
4.4 Operators List	35
4.5 Add Customer Batteries.....	35
4.6 Find Customer Batteries	36
5. Work Orders	37
5.1 Entering (creating) Work Orders.....	37
5.2 Viewing and Editing Work Orders	38
5.3 Closing Work Orders	38
5.4 Deleting a Work Order.....	38
5.5 Selecting/deselecting the Work Order.....	39
6. Data Acquisition (to take battery readings).....	42
6.1 Connecting a Nickel-Cadmium Battery	42
6.2 Testing the connection	43
6.3 Connecting a Battery with no blocks or cell terminals.....	46
6.4 Programming the Test.....	48
6.5 Recording the Test Data.....	48
6.6 Sample Screens.....	49
6.7 Stopping the Test	51
6.8 Resuming the Test.....	51

6.9	Viewing Real Time Graphical Results (Main Screen)	52
6.10	Viewing Graphical Results	53
6.11	Viewing Numerical Results	56
6.12	Printing results	58
7.	Charger-Analyzer Monitoring and Control	59
7.1	Identification of Charger-Analyzers	59
7.2	Intelligent Charger-Analyzers (ICA)	60
7.3	Modified Charger-Analyzers	60
8.	Water Level	62
8.1	Manual	62
8.2	Automatic	62
9.	Calibration	63
10.	Verification of Performance	63
10.1	Cell Simulator	63
10.2	External Measurements	66
11.	Tools	67
11.1	Edit Custom Test Settings	67
11.2	Setup Combination Tests	68
11.3	Advanced Test Settings	69
11.4	Technicians	70
12.	Installation	71
12.1	Power (mains):	71
12.2	Computer	71
12.3	Connections	71
12.4	Test	71
12.5	System Installation Pictures	71
13.	System Maintenance	74
13.1	Data Files	74
13.2	Data File Backup	74
13.3	Data File Restore	74
13.4	Viewing Data Files	74
13.5	Software Location and Updates	74
14.	Troubleshooting	75
14.1	List of common operational issues	75
15.	Parts List	77

15.1	Data Interface – P/N 9895516003	77
15.2	Data Hub – P/N 9895516001 (optional).....	77
15.3	C-Scan – P/N 9895202001.....	77
15.4	Cell Simulator – P/N 9895202301	77
15.5	20 Cell Cable with Clips (large) – P/N 9895202L20	78
15.6	External Shunt - P/N 9895202803 (Charger-Analyzer dependent)	78
15.7	Four Battery Cable – P/N 9895202804 (optional)	78
15.8	20 Cell Cable with Clips – P/N 9895202M20	78
15.9	21 Cell Cable with Clips – P/N 9895202L21	78
15.10	2x11 Cell Cable with Universal Clips – P/N 9895202D11 (optional)	79
15.11	3x7 Cell Cable with Universal Clips – P/N 9895202307 (optional)	79
15.12	Data Cable 6 (6 conductor cable with telephone modular plugs; 12 ft) – P/N 6079M0D612	79
15.13	DB9 Data Cable 9 (9 conductor cable with DB9 plugs; 6 ft) – P/N 6079DB9MF6	79
15.14	Crown for SAFT 20 Cell Batteries “Universal” Configuration) – P/N 9895203C01.....	79
15.15	Crown for SAFT 5317, 21 Cell Batteries – P/N 9895203C02	79
15.16	Crown for SAFT 4579, 20 Cell Batteries – P/N 9895203C03	79
15.17	Crown for SAFT 276CH, 19 Cell Batteries – P/N 9895203C05	80
16.	GLOSSARY	81
17.	DISCLAIMER	83
17.1	Qualified Personnel	83
17.2	JFM Engineering’s responsibility	83
17.3	User’s Responsibility	83
18.	REVISION INDEX	84
19.	Notes	85

TABLE OF FIGURES

Figure 1 – Comm Ports Screen	12
Figure 2 - Main Screen	13
Figure 3 – Typical System Configuration for two Charger-Analyzers and four batteries	19
Figure 4 - Data Interface Front Panel	20
Figure 5 - Data Interface Rear Panel	20
Figure 6 - Data Interface Connections	20
Figure 7 – Data/Control Hub	21
Figure 8 - C-Scan Rear Panel	22
Figure 9 - C-Scan Connections.....	22
Figure 10 - C-Scan Front Panel	23
Figure 11 – Data/Control Hub	24
Figure 12 - Data Hub Label.....	24
Figure 13 - Data Hub Connection for cascading	24
Figure 14 – SMC Rear Panel Connections	25
Figure 15 - Control Program Main Screen	26
Figure 16 – Comm Ports.....	27
Figure 17 - Main Screen, Showing a C-Scan available as Terminal #1.....	27
Figure 18 - Main Screen, Showing a Connected Battery.....	28
Figure 19 - Cells Simulator Rear Panel	29
Figure 20 - Cells Simulator Front Panel	29
Figure 21 – 24 Cells Simulation pattern with “as Received” test.....	30
Figure 22 - Numerical results from the Cells Simulator.....	30
Figure 23 – Blank Screen for a new Battery entry.....	31
Figure 24 – Sample Battery Model and Full Charge 6 Test Parameters.....	32
Figure 25 - Sample Battery Model and 14 hour Charge Test Parameters.....	32
Figure 26 - Sample Battery Model and six hour Charge Test Parameters.....	33
Figure 27 - Screen for the entry of Customer Information	34
Figure 28 - Screen to enter/edit the names of the system operators.....	35
Figure 29 – View/Edit/Add Customer Battery Screen.....	35
Figure 30 - Find Customer Battery Screen	36
Figure 31 - Screen to enter information into a new Work Order	37
Figure 32 - Screen to select Work Orders.....	39
Figure 33 – Work Order assigned on DT #1	39
Figure 34 – Two Work Orders in the same C-Scan.....	40
Figure 35 - Data Terminals #1 (Master) and #2(Slave) are associated with Charger-Analyzer #1	41
Figure 36 - Two C-Scan with one Charger-Analyzer	41
Figure 37 - Screen showing information on cables detected	42
Figure 38 - Main Screen showing information from various Data Terminals	43
Figure 39 - Common lead disconnected	44
Figure 40 – Cells 1-4 connected	44
Figure 41 – Cells 1-8 connected with #7 and #8 reversed	45
Figure 42 – Cells 1-16 connected with #14 connected to #15	45
Figure 43 – Four Battery Cable	46
Figure 44 – SLA Battery with no accessible block terminals.....	46
Figure 45 – Nickel-Cadmium Battery with no accessible cell terminals	46
Figure 46 - Screen showing information on cables detected	46
Figure 47 - Screen showing information on two batteries connected	47
Figure 48 – SLA Battery with accessible blocks	47
Figure 49 - Recording test data.....	48
Figure 50 - Battery cells with colors for “AS RECEIVED”	49
Figure 51 - Cells voltages of a battery at the beginning of “CHARGE”	49
Figure 52 - Battery shown further along in “CHARGE”	50
Figure 53 - Battery nearing the end of “CHARGE” (higher cell voltages)	50

Figure 54 - Screen showing bar colors for the cells of a battery that failed "Capacity"	51
Figure 55 - Screen showing battery voltage vs. time. Note the color change as the battery fails capacity.....	52
Figure 56 - Screen showing a cell voltage vs. time during capacity testing	52
Figure 57 - Graphical Comparison Screen; Battery Voltage and Cell Voltages.....	53
Figure 58 - Comparison Screen; Charge Voltage and Cell Voltages.....	54
Figure 59 - Comparison Screen; Charge Voltage and Charge Current.....	54
Figure 60 - Charge Voltage with Cell Voltages.....	55
Figure 61 - Cell Voltages and individual Cell with voltage drop.....	55
Figure 62 - Work Order Log	56
Figure 63 - Battery History Report	57
Figure 64 - Cell Data.....	57
Figure 65 - Work Order Summary	58
Figure 66 - Print Button	58
Figure 67 - Charger Types and Status.....	59
Figure 68 - Charger Types and Status.....	59
Figure 69 - Rear Panel Connections.....	60
Figure 70 - C-Scan Rear Panel	60
Figure 71 - Control and Shunt connectors on the Charger-Analyzer (CCA)	61
Figure 72 - Main Screen with Water Level sub Screen	62
Figure 73 - Cells simulation for a 24 Cells	63
Figure 74 - Cells simulation for two 11 cell batteries.....	64
Figure 75 - Cells simulation for one 20 cell battery	64
Figure 76 - Cells simulation for one 21 cell battery	65
Figure 77 - Cable Code Switch (#1 shown).....	65
Figure 78 - Cell Simulator Front Panel Switches	66
Figure 79 - Screen to edit custom tests	67
Figure 80 - Screen to edit custom tests	68
Figure 81 - Advanced Test Settings.....	70
Figure 82 - Screen to enter/edit the names of the system operators.....	70
Figure 83 - Data Interface and C-Scan.....	71
Figure 84 - Cell Simulator and C-Scan	72
Figure 85 - Temp-Plate and C-Scan.....	72
Figure 86 - Charger-Analyzer, Data Interface, C-Scan and Temp-Plate.....	73

1. System Overview

1.1 Description

1.1.1. Introduction:

Note: The BTAS-16K is a complete new version of the BTAS16 that has been in operation since 2001. It is characterized by new features, faster operation, modern screens and a wider utilization of Windows tools.

The BTAS-16K is a system designed to automate the measurement and analysis of battery parameters as encountered in the process of the testing and certification of aircraft Nickel-Cadmium batteries. *Note: Applicable also to Lead-Acid batteries.*

Proper servicing of Nickel-Cadmium aircraft batteries requires that each of the cells be monitored throughout the charge and discharge cycles, not just the battery terminal voltage. Due to the large number of cells, typically 20, this is a laborious and error prone task, so much that it is currently reduced to a practical minimum of readings.

Although this minimum of test data marginally satisfies certification requirements, it does not provide the time detailed information needed to determine the “true” condition of the cells. Lack of continuous cell voltage measurements prevents a better assessment of the condition of the battery and also prevents a better prediction of the future performance of the battery.

The continuous measurements provided by the BTAS16 make it possible to determine, well in advance, the condition of the battery thus providing opportunities to save testing time.

Measurements are not limited to cell voltages. The system measures also the temperature of the battery as well as the charge/discharge current, thus providing a more complete picture of the test being performed.

Cell readings also become more accurate because they are all performed at the same time, and are conveniently stored with a time stamp, which provides an accurate voltage vs. time performance indication.

In addition, the system provides full monitoring and control of new Intelligent Charger-Analyzers SupersederXG, SuperMini, SuperMasterCharger, 24-400xg, miniMasterCharger and MFC-10 and limited monitoring and control of specially configured Charger-Analyzers such as the Superseder IIC, SuperCharger60C and MasterCharger LXC.

1.1.2. System Components:

The BTAS16 System is comprised of a number of Data Acquisition Terminals (from one to 16), known as C-Scans. C-Scans collects the data from a connected battery and transmit this data to a computer running the BTAS-16K software for the software to receive and process the information. The C-Scan can also provide monitoring and control of specially configured Battery Charger-Analyzers.

There are two types of accessories used to read the individual cell voltages; Cables with Clips suitable for any battery and custom Crowns for specific types of batteries.

A Test Box, known as the Cell Simulator, is also part of the system and it is used to test all functions and verify the performance of the system.

A Barcode scanner can optionally be used to simplify the task of entering battery tracking information.

1.1.3. Screen views:

User-friendly screens provide the environment to select the terminals in operation and to program the tests to be performed. Once started, the computer collects data from all terminals and displays the information in graphical and numerical format. Colors in the bar graphs are used to indicate the relative state of the batteries and of individual cells.

1.1.4. Reports:

Once tests are completed, screen and printed reports are available showing the information accumulated, and providing an end-of-cycle summary analysis. Note that this information is also available as the data is being collected.

1.1.4.1. Types of Reports:

- Battery Data
- Cell Data (as applicable to the type of battery being tested)
- Test Summary
- Work Order Log
- Work Order Summary
- Work Order List

1.1.5. Graphs

During the tests or once tests are completed (or terminated), screen and printed graphs are available showing the information accumulated, and providing an end-of-cycle summary analysis.

1.1.5.1. Types of Graphs:

- Battery Voltage
- Battery Current
- Battery Temperature
- Individual Cell Voltages (as applicable to the type of battery)

1.1.6. Data archive:

All information is tracked and archived using work orders as the primary record and battery serial number and barcode as identifiers. Data from new tests can be compared to the previous test to establish battery performance benchmarking.

1.1.7. Databases:

Databases for Customers and Customer Batteries are used to fill-in work orders and to provide Test Parameter programming for the Intelligent Charger-Analyzers.

1.1.8. Charger-Analyzer Monitoring and Control:

- The system can also provide full monitoring and control of new Intelligent Charger-Analyzers such as SupersederXG, SuperMasterCharger, 24-400xg, miniMasterCharger and MFC-10.
- A special feature of this new release is the programming of Battery Test Parameters directly from the computer based on stored information for specific batteries.
- The system can also provide limited monitoring and control of specially configured Charger-Analyzers such as the Superseder IIIC, Supercharger60C, and the MasterCharger LXC
- Special modifications to the above mentioned instruments allow the C-Scan to determine if a Charger-Analyzer is connected, if the power is on, which type of charger it is and can start/stop its operation synchronizing the data recording with the operation of the Charger-Analyzer.

1.2 Specifications

- 1.2.1. Number of C-Scan Terminals: 16 max (16 practical)
- 1.2.2. Number of Charger-Analyzers: 16 max (8 practical)
- 1.2.3. Number of cells per C-Scan: 24 max
- 1.2.4. Number of C-Scans per Charger: 1 or 2 (battery type dependent)
- 1.2.5. Number of batteries per C-Scan: One battery of up to 22 cells, two batteries of up to 11 cells and 3 batteries of up to 7 cells (adaptors are needed for 11 and 7 cell batteries).
- 1.2.6. Cell Voltage: 2V max
- 1.2.7. Battery Voltage: 40V max
- 1.2.8. Battery Current: 100A max for Charger-Analyzers for Mainship Batteries and 2A/10A for Charger-Analyzers for small battery packs.
Current is measured via the internal shunt on Intelligent Chargers and specially modified chargers or via an external accessory shunt cable for other types of Charger-Analyzers.
- 1.2.9. Battery Temperature: 4 sensors via the Temperature Plate or Temperature Cable for battery packs.

1.3 Customer supplied items:

- 1.3.1. Computer: Dual Core PC minimum, i5 recommended, 2.5GHz clock speed
- 1.3.2. Operating System: Windows, Vista, Windows 7, 8 or 10(best)
- 1.3.3. Operating System Language: Any
- 1.3.4. Memory: 4 Gb
- 1.3.5. Monitor: 19” minimum, 24” recommended.
- 1.3.6. Number of Monitors: Two recommended
- 1.3.7. Screen Resolution: as required to fit the screen in the monitor (highest recommended).
- 1.3.8. Hard Drive: 500G minimum
- 1.3.9. Audio Speakers (optional)
- 1.3.10. Bar Code Scanner (optional)
- 1.3.11. Printer: Standard color Inkjet or color Laser
- 1.3.12. Power Back-up for the Computer: 500VA minimum, 1000VA recommended
- 1.3.13. Power Back-up for the C-Scan Terminals: 300VA minimum, 500VA recommended.

1.4 Operating Overview

1.4.1. Operating Summary

The BTAS16 main function is to collect data from each of the batteries and to store the information in data tables.

The acquisition of data is the function of the Data Acquisition Terminals (C-Scans) which measure and convert all parameters for the batteries under test.

Once the data is collected and stored, it can then be retrieved for review in screen views and for reporting through the printer.

All data is organized under Work Orders (one per battery type and serial number). It is therefore necessary to enter a Work Order before any testing can be performed. [See 5.1]

In addition to Work Orders, Customers [See 4.3] and Customer Batteries must also be entered in the database. [See 4.5]

Batteries must also be identified in the database. The Battery Database contains information on the batteries currently in use where the end-user must enter the basic parameters (current, voltage, time, etc.) as outlined in the CMMs.

The Operator programming a particular work order can also be identified with the Work Order. See [4.4]

Once the Work Order and other basic information are available in the System, the Work Order(s) can now be associated with a Data Terminal Station. [See 6.3]

A Charger Station Number must now be associated with the Data Terminal. See [Figure 67], [Figure 68]

If the Charger-Analyzers are interfaceable with the C-Scan, the Link check mark can be set. See [7.3.3] for the BTAS-16K software to be able to control it (start/stop).

If the Charger-Analyzers are recognized as “Intelligent” the automatic configuration can be set for the BTAS to load the Test Parameters.

The color of the box surrounding the check mark will determine the status of the Charger-Analyzer. See [Figure 67], [Figure 68]

The Test to be performed must be selected from the pull down menu.

If all preliminary information is set and the Data Terminal is Active, the In Use check mark area will be green indicating that the test can be started. See [6.5]

Once the recording of data has started, the E-Time box will display the elapsed time and the Status box will display the number of records taken and the total number of recordings expected for the specific test.

The recording can be Stopped and Resumed by unchecking and rechecking the Rec box and selecting the appropriate option from the drop down.

The recording will also stop automatically at the end of the test duration (as determined by the test selected) or will stop at any time if the Charger-Analyzer operation is interrupted (no current or fault detected).

Voltage, Current and Temperature readings can be seen in real time, in numerical format in the right hand area or in bar graph format in the bottom area.

Data from any current or past test can be viewed and printed in numerical format (reports) or in bar-graph format (graphs). See [6.10]

When viewing bar-graph data, two tests can be displayed for comparison, such as first and last capacity test, or current capacity test compared to a prior capacity test, or battery voltage vs. charger current, etc.

Colors in all bar-graphs reflect good-marginal-fail conditions of battery or cell voltages.

1.4.2. Opening Screen

The opening screen provides the greeting and the Program Version

1.4.3. Comm Ports Screen

The Com Ports Settings Screen is used initially to synchronize the two USB Data and Control connections and can be found under the File menu. For more details, see [3.2.2]

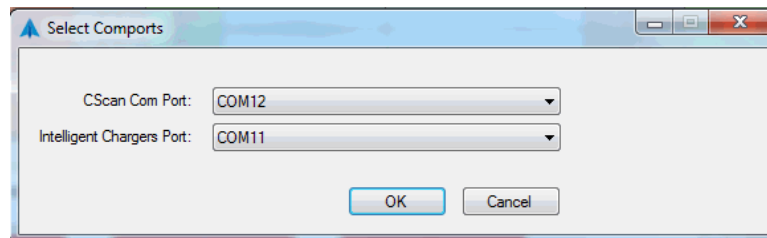


Figure 1 – Comm Ports Screen

1.4.4. There are four sections in the Main Screen – [See Figure 2]:

1.4.4.1. DATA TERMINAL STATUS

- Data Terminal / Charger Status
- This is the area where tests and operating details of each of the 16 possible Data Terminals and Chargers can be monitored and controlled.
- Other Data Terminal information (Battery Model and Serial Number) on the top line of the screen (below the menu).

1.4.4.2. MESSAGE CENTER

- Window to display error messages and a charger status messages
- Test termination due to completion of expected number of samples.
- Test termination due to Charger-Analyzer termination (no current detected or other faults)
- System error messages
- Right click to clear

1.4.4.3. REAL TIME DATA

- Real time numerical data for the selected Data Terminal
- This is the data that originates in the Data Terminals as it is received by the program with each one of the scans.
- The data displayed can be printed (right click).

1.4.4.4. GRAPHICAL DATA

- Graphical data for the selected Data Terminal
- This bar-graph display provides information as it is received and stored by the program.
- Cell Voltages is the bar graph voltmeter display of the numerical data seen on the right hand side. This is real time data. All others are cumulative (voltage, current and temperature vs. time) type of bar-graph displays.
- Left click allows for user to select data being displayed.
- Bar Graphs currently being displayed can be printed (right click).

1.4.5. Main Screen displays and controls

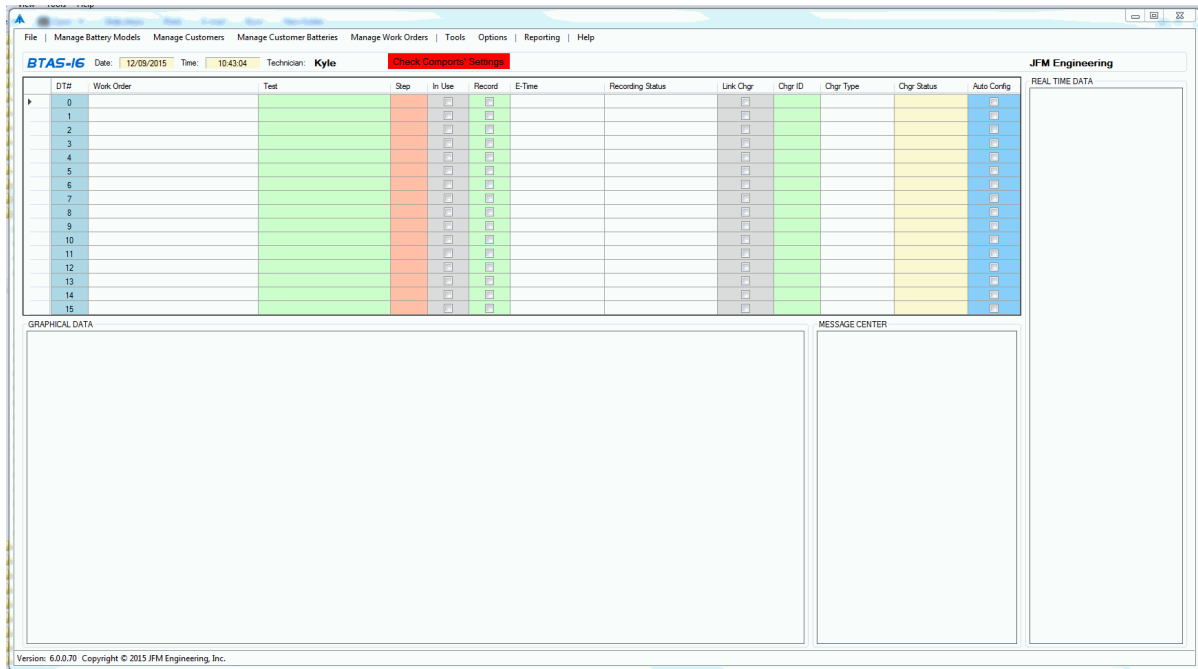


Figure 2 - Main Screen

1.4.6. Other sections are:

1.4.6.1. Pull down menus (from the toolbar at the top of the screen)

1.4.6.1.1. File

- Comm Port Operations (USB port assignment for data and control)
- Database Operations. Backup and restore the database. Also, to import the database from the previous version.
- Exit. Closes the program.

1.4.6.1.2. Manage Battery Models

- Manufacturer and type (model) basic information
- Test parameters per the CMM for each specific battery entry.

1.4.6.1.3. Manage Customers

- View/Enter/Edit/Delete Customers

1.4.6.1.4. Manage Customer Batteries

- Entry of specific Customer/Battery information (serial number, etc.)

1.4.6.1.5. Manage Work Orders

View/Enter/Edit/Delete Work Orders

1.4.6.1.6. Tools

- Highlight Current. Highlights the Row associated with the C-Scan currently be interrogated by the program.
- Sequential scanning: rotates the selected channel, one at a time.
- Find Stations: finds the C-Scans that are connected (used only when no tests are being performed).
- Intelligent Charger Configuration Interface. Works as a keypad replacement. Allows for the user to setup and run the charger from the computer in a manual fashion. Disabled when Auto Config is turned on.
- Enable Automatic Charger Configuration. When enabled the program will setup connected intelligent chargers before tests are run.
- Water level (MasterFiller). Sub screen to enter and record water dispensed into each of the cells (it becomes part of the Summary Report).
- Edit Custom Test Settings. Provides a dialog to edit custom test settings.

- Setup Combination Test. Provides a dialog to setup combination tests, which are lists of tests to be performed in a designated sequence.
- Advanced Test Settings. Provides access to Advanced Test Settings.
- Sequential Scanning Settings. Allows for the user to select specific channels to sequentially scan.
- Notification Service. Allows for the program to notify you of the status of the program remotely through an email server.

1.4.6.1.7. Options

- Select Temperature Units: °C (default) or °F
- Select Cell Order: Cells are numbered from the Positive Terminal or from the Negative Terminal (default).
- Show Chart Selection Boxes: Chooses where to display the chart selection boxes. Otherwise accessed though left click on the Graphical Display.
- Select Technician: Provides a drop down of the currently entered technicians.
- Edit Technicians: Allows for technicians to be added, deleted or edited.

1.4.6.1.8. Reporting

- Work Order Reports: Allows for reporting of Work Orders associated with a work order status, customer, battery serial number or combination thereof.
- Test Reports: Allows for the production of test reports which documents Voltage, Current and Temperature of the battery and cells during tests.
- Battery Reports: Allows for the creation of a report detailing the history of a single battery.
- Batch Reporting: Allows for a set of reports to be automatically saved to file.
- Graphs: Allows the user to recreate and print graphs of battery parameters from tests in the database.

1.4.6.1.9. Help

- Program Version: Includes major revision number and minor release date.
- Help: Includes link to manual, JFM engineering website, support email address and program change log.

2. Condensed Operating Procedure

2.1 Introduction

- Simplified Instructions for the operation of the BTAS software
- Numbers in parenthesis () refer to sections in the Instruction Manual

Note: The BTAS16 requires that specific data be available in the database before a Work Order can be entered and processed:

- Technician (name)
- Customer (name)
- Battery (manufacturer, Type and Test Parameters)
- Customer's Battery (Type and serial number)

2.2 Operational Steps

2.2.1. Enter basic information

- 2.2.1.1. Edit Technicians (4.4) (Options: Edit Technicians)
Enter the names of technicians that will use the system
- 2.2.1.2. Select Technician (4.4) (Options: Select Technician)
Select from the list
- 2.2.1.3. Customers Table (4.3)
Enter the names of customer that are/will be serviced. If your organization does not perform battery test for others, enter the name of your organization.
- 2.2.1.4. Battery Model Table (4.1)
 - Enter the information specific for each battery (Manufacturer and Type)
 - For automatic operation with Intelligent Charger-Analyzers, enter Battery Test Parameters from the CMM into associate test tabs.
- 2.2.1.5. Customer Battery Table (4.5)
Enter the serial numbers of batteries belonging to your customers and/or your organization and associate them with a battery model and owner.
- 2.2.1.6. Create Work Orders (5.1)
Create a Work Order for the battery that is to be tested.
- 2.2.1.7. Apply the Work Order (5.5)
Apply the Work Order to the Data Terminal (C-Scan DT#) where the battery is connected by clicking on the associate Work Order cell (pop up dialog).
- 2.2.1.8. Select the Test (6.4.2)
Select the test to be performed by clicking on the associated Test cell (Pull down menu).

2.2.1.9. Click “In Use” (6.5.1)

If not already selected, click “In Use”. The area around the check box will turn green, indicating that the program is communicating with the Data Terminal.

2.2.2. **Set the Charger-Analyzer**

2.2.2.1. Select the Charger-Analyzer CID (. See [Figure 67], [Figure 68]) from the pull-down menu. The program will fill in the Charger Type automatically.

2.2.2.1.1. Intelligent Charger-Analyzer (ICA)

For an Intelligent Charger-Analyzer (SupersederXG, SuperMasterCharger, etc.) enter the terminal number in the upper left hand corner of the LCD window (T1, T2, etc.)

2.2.2.1.2. Controllable Charger-Analyzer (CCA)

For a Controllable Charger-Analyzer (Superseder IIIC, SuperrCharger60C, MasterCharger C, etc.) select a unique station number (different from any other). Note that current is monitored through an internal shunt connected to the C-Scan and that control is through a cable between the C-Scan and the Charger-Analyzer.

2.2.2.1.3. Other Charger-Analyzer

For any other Charger-Analyzer select a unique station number (different from any other). Note that the BTAS must be able to see current as provided by an external shunt wired in the negative lead and connected to the C-Scan.

2.2.2.2. Program the Charger-Analyzer

Setup the Charger-Analyzer for the test to be performed (see the Charger-Analyzer instruction manual). This will be done automatically by the program is the charger being used is an intelligent charger and the Auto Config option is selected.

2.2.2.3. Link the Charger-Analyzer (6.5.3)

Click on Link C. (check) to allow the program to control (Start-stop) the Charger-Analyzer in synchronization with the starting/stopping of recording. The box will turn green to indicate that the Charger-Analyzer is ready to be linked otherwise it will turn red. Note that this is applicable only for ICAs and CCAs.

2.2.2.4. Automatic loading of Battery Test Parameters for Intelligent Charger-Analyzers

- Open the Auto Config Column (Tools: Enable Automatic Charger Configuration)
- Click on Auto Config. When the test is started, it will first configure the Charger-Analyzer with the Battery Test Parameters and it will then start the operation.

Note: The battery needs to be defined in the Battery Database under Manage Battery Models before this feature can be used. An error message will be displayed if attempting to run with the battery not properly defined.

2.2.3. **Run the Test**

2.2.3.1. Start the Test and Charger-Analyzer

Prior to starting a new test verify that the data displayed in the Readings Window is consistent.

Click on Record and select Start Test to start the recording of battery data (check).

If the Charger-Analyzer is not linked, then it must be started prior to the start of the recording. Otherwise it will be started automatically with the start of the test.

Note: The program must detect current (charge or discharge) to process the recordings. The program will stop and generate an error message if current is not detected.

For Intelligent Charger-Analyzers, when the test is started, it will first configure the Charger-Analyzers with the Battery Test Parameters and it will then start the operation (If so configured).

2.2.3.2. Stop the Test and Charger-Analyzer (6.5.4)

Click Record and select Stop Test to stop the recording of battery data.

If linked, it will stop the Charger-Analyzer.

If the Charger-Analyzer is not linked, then it must be stopped manually.

2.2.3.3. Message Center

The system will report through the Message Center the reasons for stopping the recording.

2.2.4. **View information as it develops**

2.2.4.1. Numerical

View numerical data on the selected channel (DT#) for cell voltages, battery voltage, current, etc. (right hand screen)

2.2.4.2. Bar Graph

View graphical data on the selected channel (DT#) cell voltages, battery voltage, current, etc. (bottom screen)

2.2.5. **Review the information after the test**

2.2.5.1. Reports (6.11)

Click on Reports and select the Work Order and Test Step
View and print the results

2.2.5.2. Graphs (6.10)

Click on Graphs and select the Work Order and Test Step
View and print the results

3. Initial Setup

Pictorial of typical installations

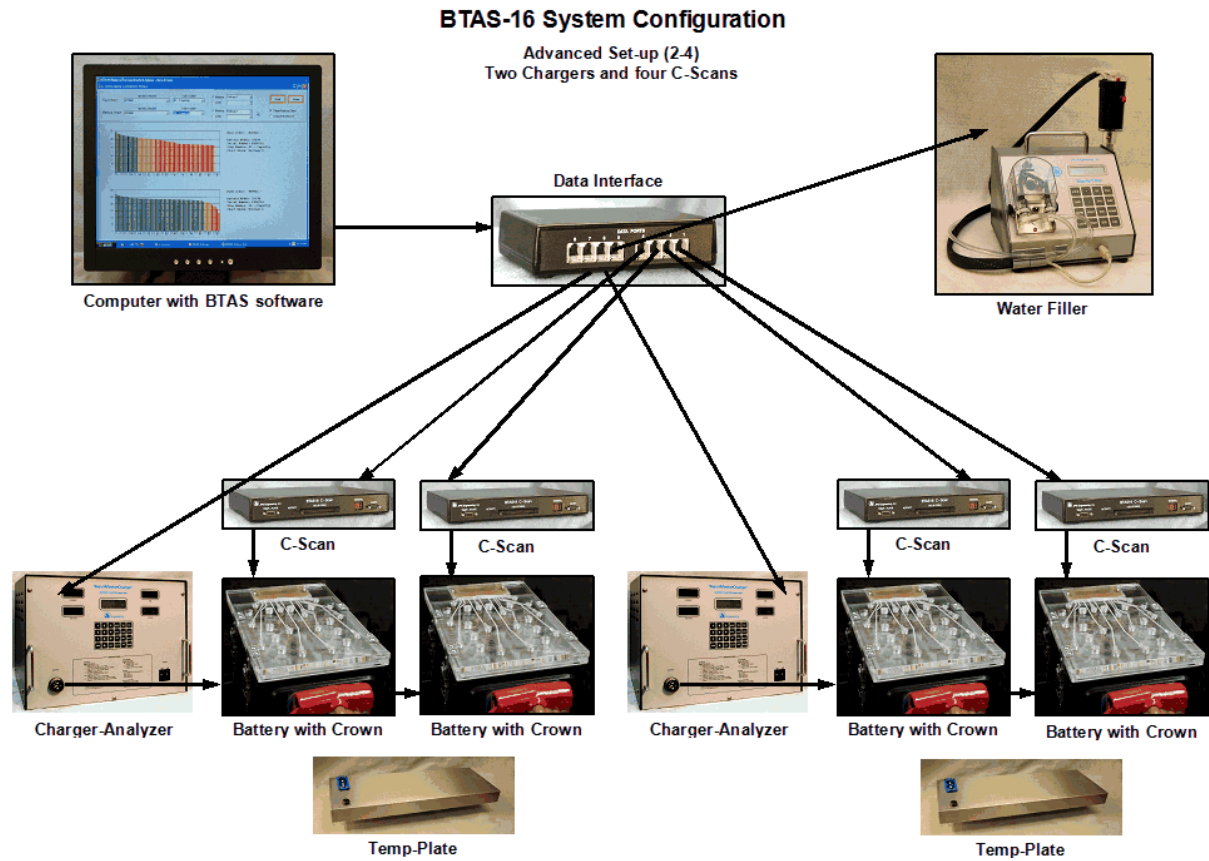


Figure 3 – Typical System Configuration for two Charger-Analyzers and four batteries

3.1 Connections

3.1.1. Computer

- Setup, connect and power up the computer per the computer manufacturer's instructions.
- Load the BTAS-16K software. Follow the installation instructions provided with your copy.

3.1.2. Data Interface

- Connect the Data Interface USB cables to the Computer's USB ports
- Note that the USB cables are identified as USB1 and USB2 although the order of connection is of no importance at this time.
- Verify that the power LED turns on



Figure 4 - Data Interface Front Panel

- Connect the 6 pin Data Cables to the Data Interface and route to the locations where the C-Scans and Charger-Analyzers will be operating.
- Ports 1 – 4 are for the C-Scans (Data)
- Ports 5 – 8 are for the Intelligent Charger-Analyzers (Control)



Figure 5 - Data Interface Rear Panel

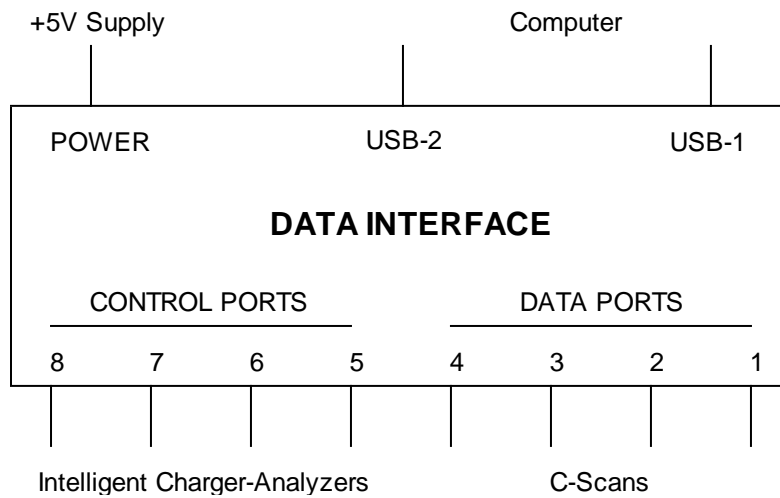


Figure 6 - Data Interface Connections

- Use Data Hubs to facilitate the routing of Data and Control Cables from the Data Interface to the C-Scans (cascading daisy chain as opposed to direct connections). For connections, see [Figure 12], [Figure 13] and [Figure 11]
- *Note: if using Hubs, observe that hubs have one input (from the Interface) and four outputs. Three for terminals and one to cascade to the next location.*



Figure 7 – Data/Control Hub

3.1.3. C-Scan

- Locate the C-Scans in the vicinity of the Charger-Analyzers.
- Set the desired Channel Numbers (0 through 15) with the Rotary Switch labeled TERMINAL.



Figure 8 - C-Scan Rear Panel

- Note: The rotary switch to select the channel number is marked 0 through 9 and A through F, where A is channel 10, B is 11, C is 12, D is 13, E is 14, and F is 15.

Note: verify that all channel numbers are unique. Any repetition of channel numbers will cause system errors.

- Connect the Power Supplies to the C-Scans in the connector labeled POWER.
- Connect the Power Supplies to a battery backed-up AC source (UPS).
- Connect the Control Cable from the Charger-Analyzer with the “C” mod (Superseder IIIC, SuperMasterCharger60C and MasterCharger LXC) to the connector labeled “CONTROL”

Note: the Control Cable is not used by the Intelligent Charger-Analyzers.

- Connect the 6 pin flat Data cables to the C-Scans in the connector labeled DATA

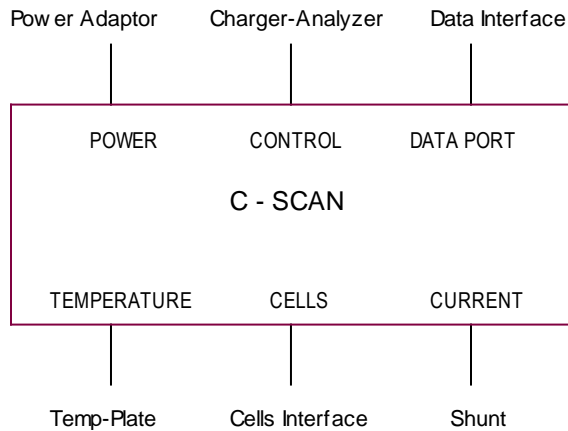


Figure 9 - C-Scan Connections



Figure 10 - C-Scan Front Panel

- Connect the Shunt Cable to the connector labeled SHUNT
- Connect the Temp-Plate Cable to the connector labeled TEMP-PLATE.
- Verify that the Terminal Number LED Readouts turn on showing the selected terminal number (requires that the C-Scan be interrogated by the Program).

Note: The ACTIVITY LEDs will not blink until the program has been started and the Terminal selected.



Figure 11 – Data/Control Hub

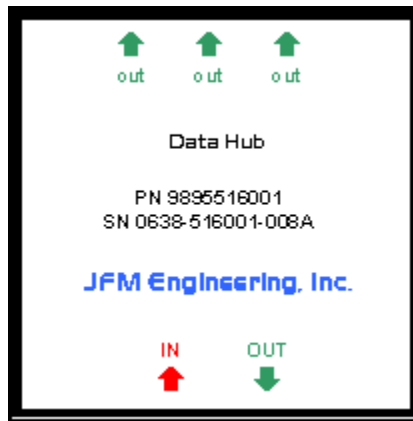


Figure 12 - Data Hub Label

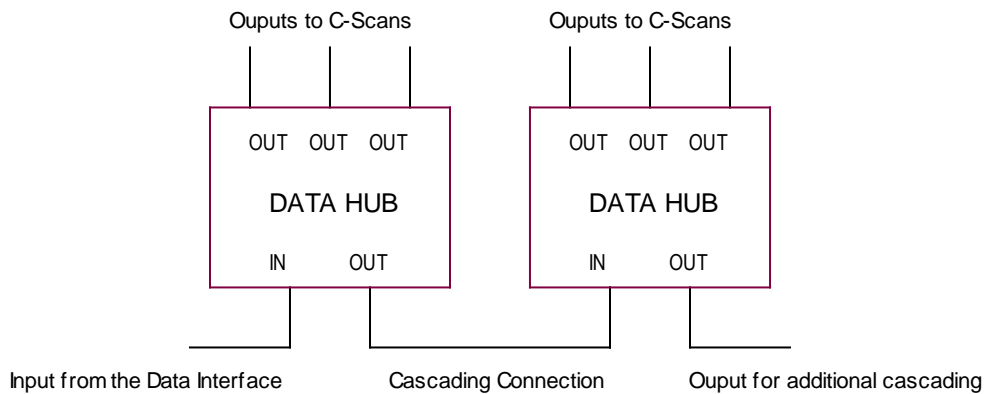


Figure 13 - Data Hub Connection for cascading

- 3.1.4. Connection for control of Intelligent Charger-Analyzers
Connect ports 5-8 in the Data Interface to the Connector in the rear of the Charger-Analyzer labeled BTAS. See [Figure 14].

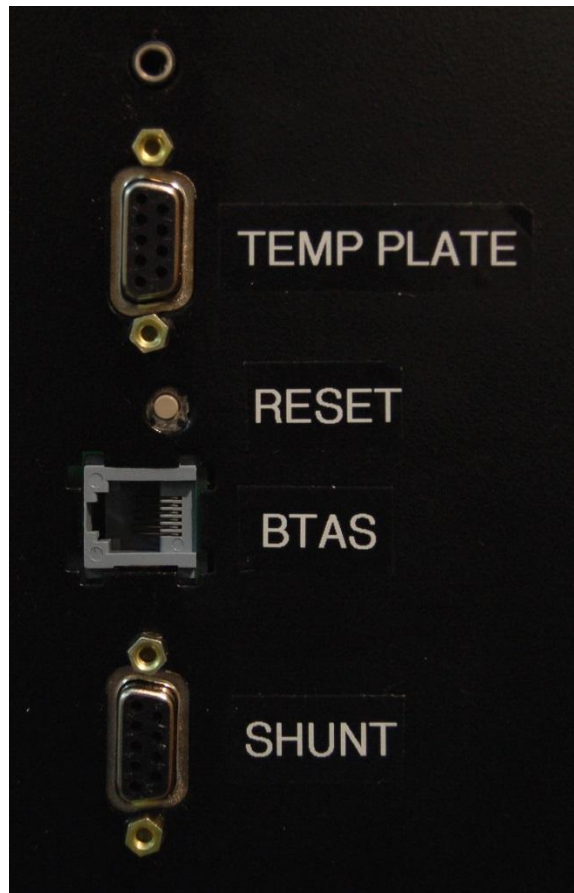


Figure 14 – SMC Rear Panel Connections

3.2 System Test

- 3.2.1. Start the BTAS-16 program. The screen should come up with no selections (immediately after setup).

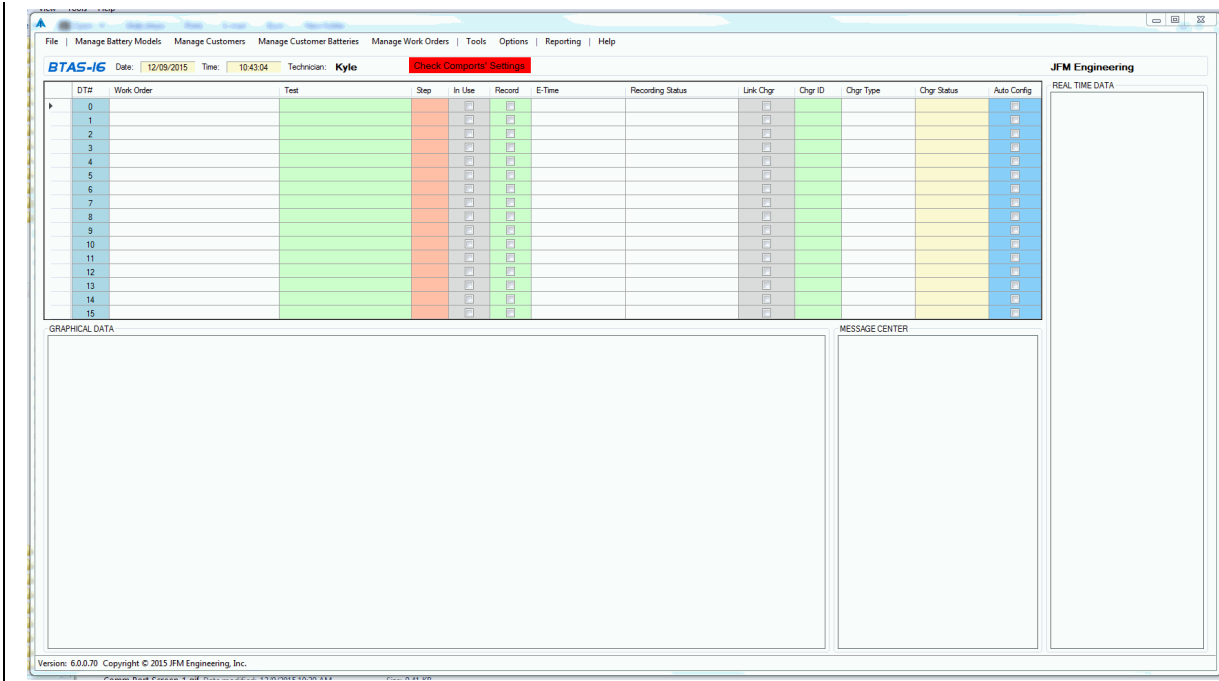


Figure 15 - Control Program Main Screen

- 3.2.2. Assign USB Ports for Data and Control

On the Main Screen:

- Click on the File pulldown (upper left)
- Open Comm Port Operations – see [Figure 16]
- Determine that two USB channels are available (there may be other USB ports already assigned depending on the accessories connected to the computer).
- With the pull down, select the Comm Ports for Data (C-Scans) and Control (ICAs) to match the available USB Comm ports. Which Comm port is assigned to the C-Scans and Intelligent Chargers is not important.
- Use Tools-> Find Stations to find the connected C-Scans. Verify that basic C-Scan information is displayed on the data window at the right hand of the screen when the associate row is selected.
- The ACTIVITY LED indicators in the front panel of the C-Scan will indicate if the program is interrogating terminals (top LED, green) and if the particular Terminal is responding (bottom LED, red).
- The top C-Scan LED indicates that the terminal (all terminals, simultaneously) is being interrogated (short flash, several times a second), and the bottom LED responds when it detects its assigned terminal number (longer flash, once per cycle, the actual time period depending on the number of terminals connected).

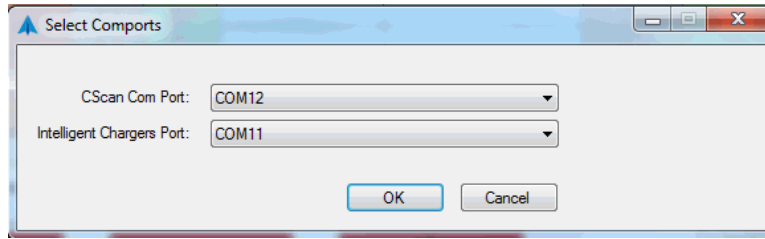


Figure 16 – Comm Ports

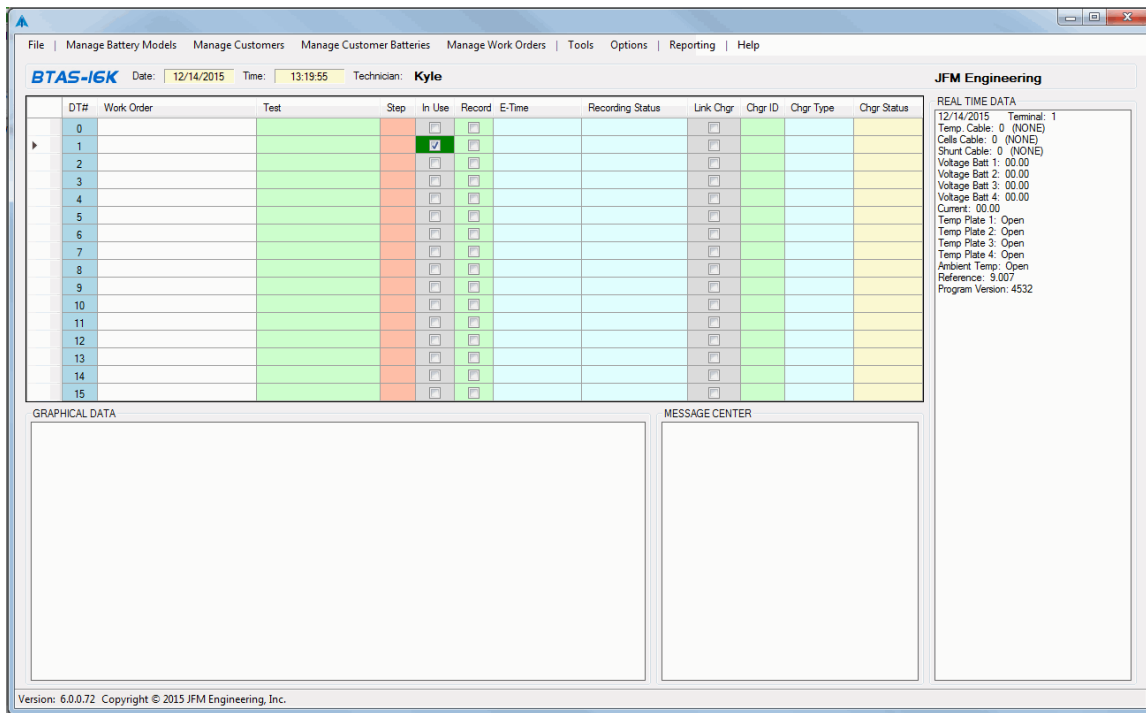


Figure 17 - Main Screen, Showing a C-Scan available as Terminal #1

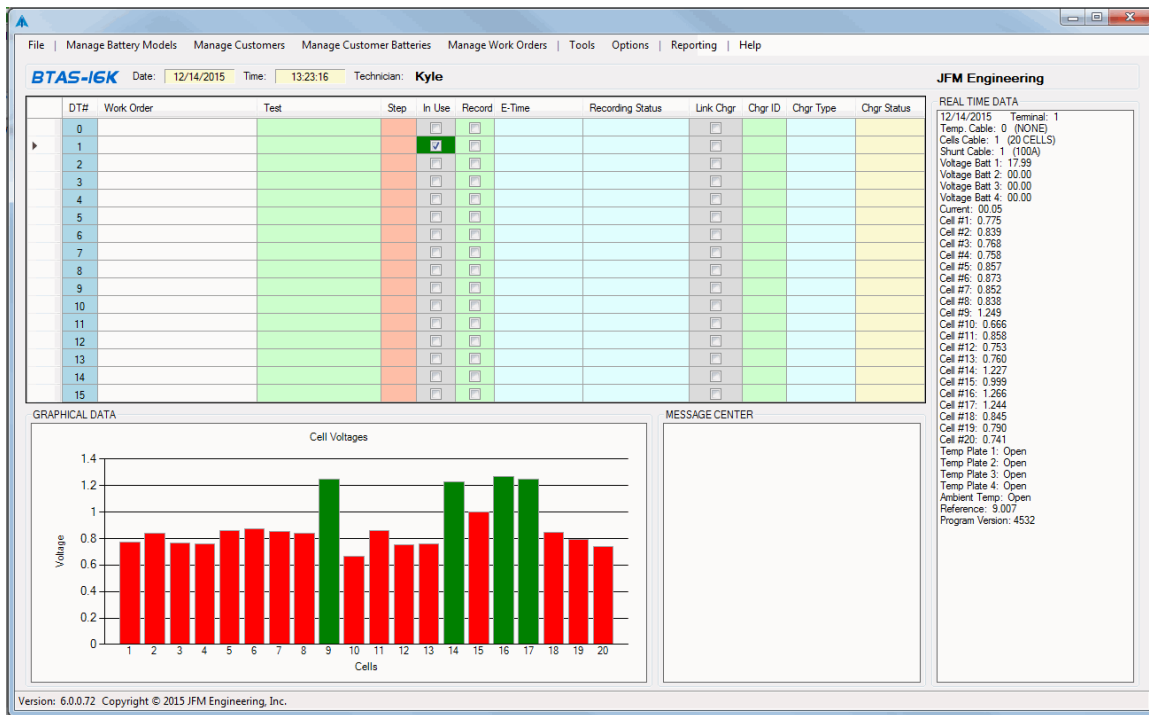


Figure 18 - Main Screen, Showing a Connected Battery

3.3 Tests with the Cell Simulator

- 3.3.1. Connect the Cells Simulator to a connected C-Scan using the 50 conductor flat cable
- 3.3.2. Connect the 12V Power Supply to the Cell Simulator



Figure 19 - Cells Simulator Rear Panel

- 3.3.3. Connect the DB9 cables to the SHUNT, TEMP-PLATE and CONTROL corresponding connectors on the C-Scan



Figure 20 - Cells Simulator Front Panel

3.3.4. Simulating cells AS RECEIVED

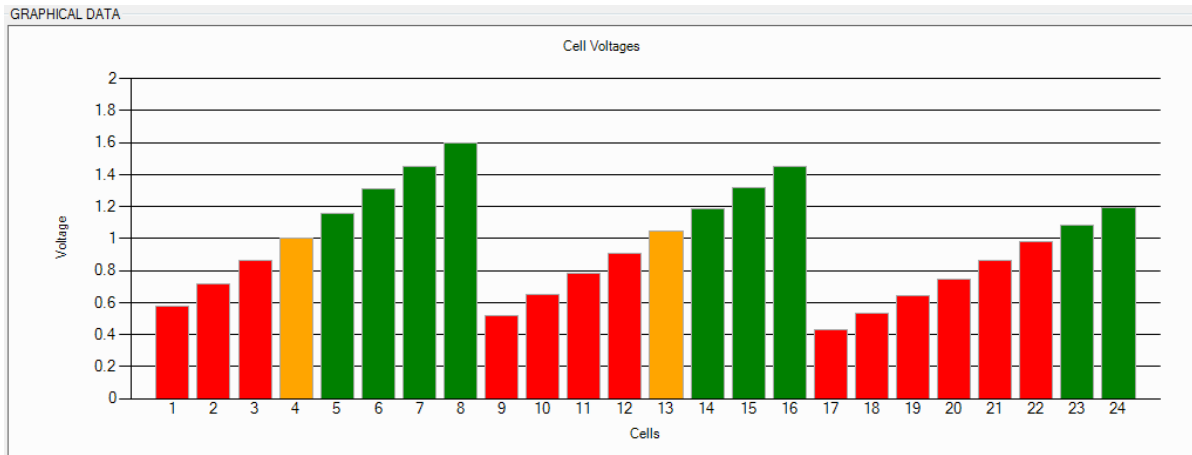


Figure 21 – 24 Cells Simulation pattern with “as Received” test

3.3.5. Numerical values from the simulator

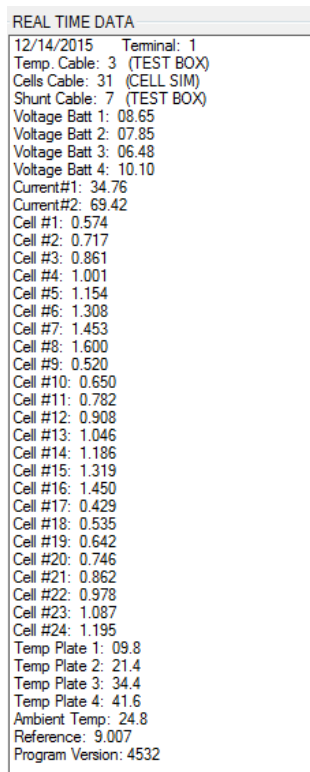


Figure 22 - Numerical results from the Cells Simulator

4. Databases

4.1 Navigation

4.1.1. The top bar of all database interface screens are used to navigate through the database. The navigation bar allows for you to refine the displayed data base records, click through the records one at a time and also save (disk icon), delete (x icon) or add new entries (plus icon).

4.2 Batteries

4.2.1. Enter the Battery Definitions and Test Parameters (per the CMM)

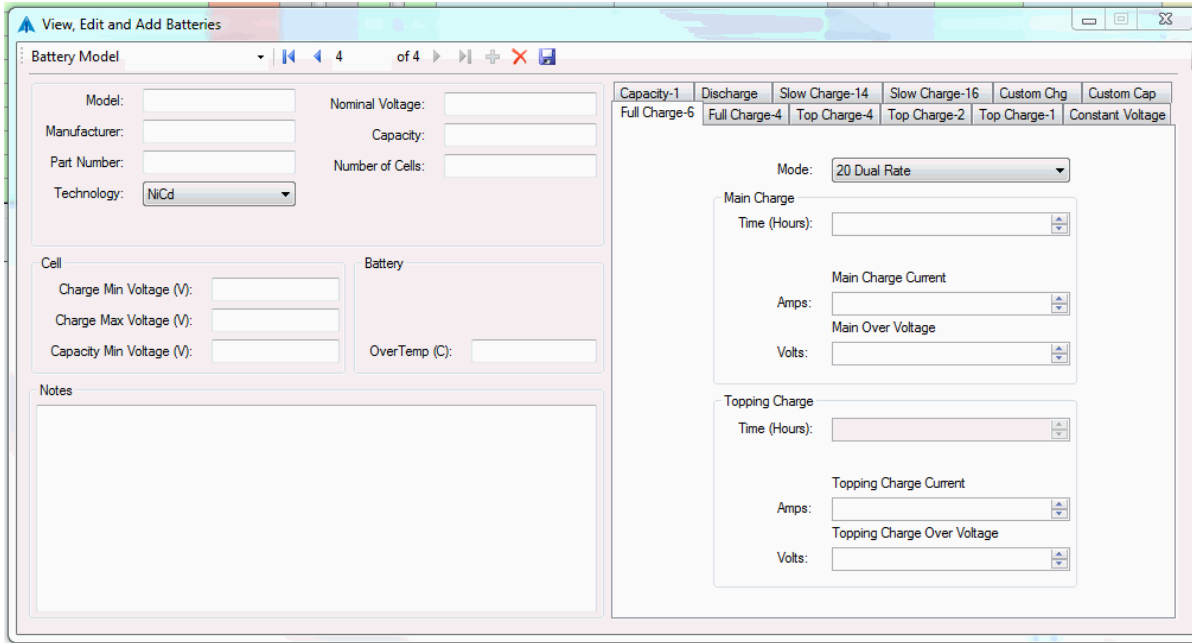


Figure 23 – Blank Screen for a new Battery entry

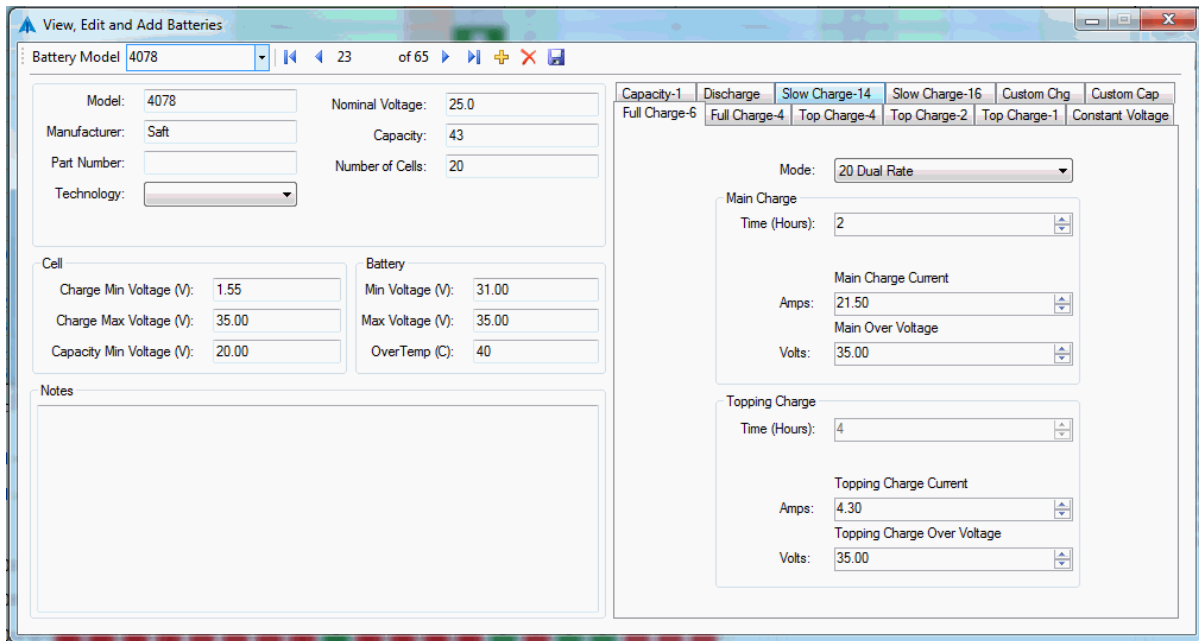


Figure 24 – Sample Battery Model and Full Charge 6 Test Parameters

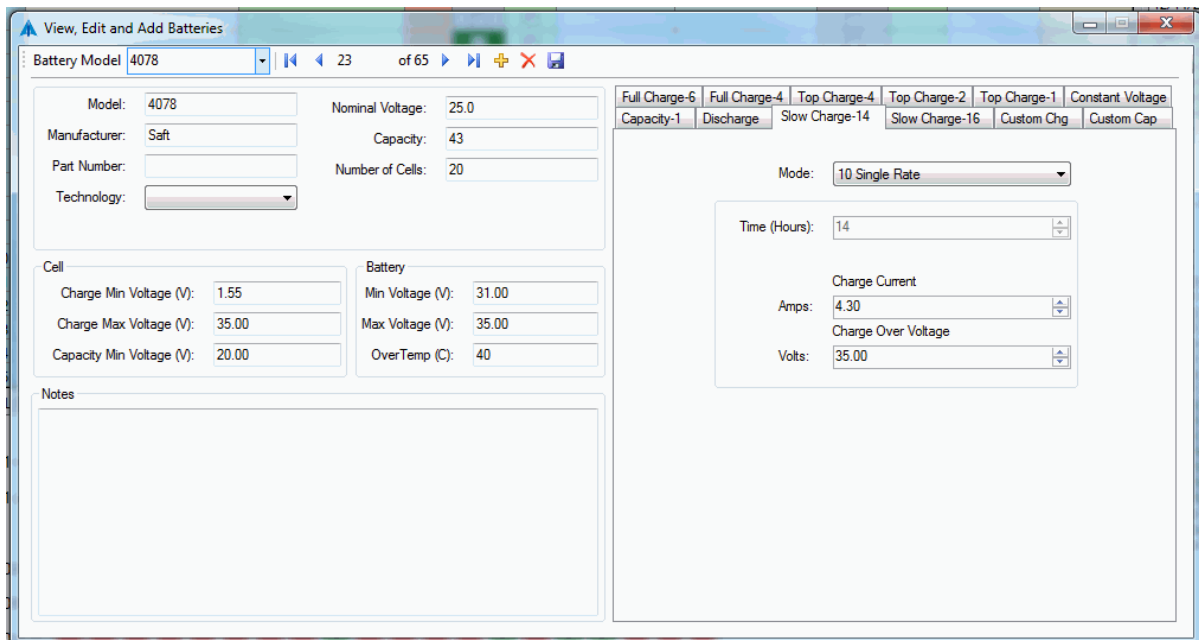


Figure 25 - Sample Battery Model and 14 hour Charge Test Parameters

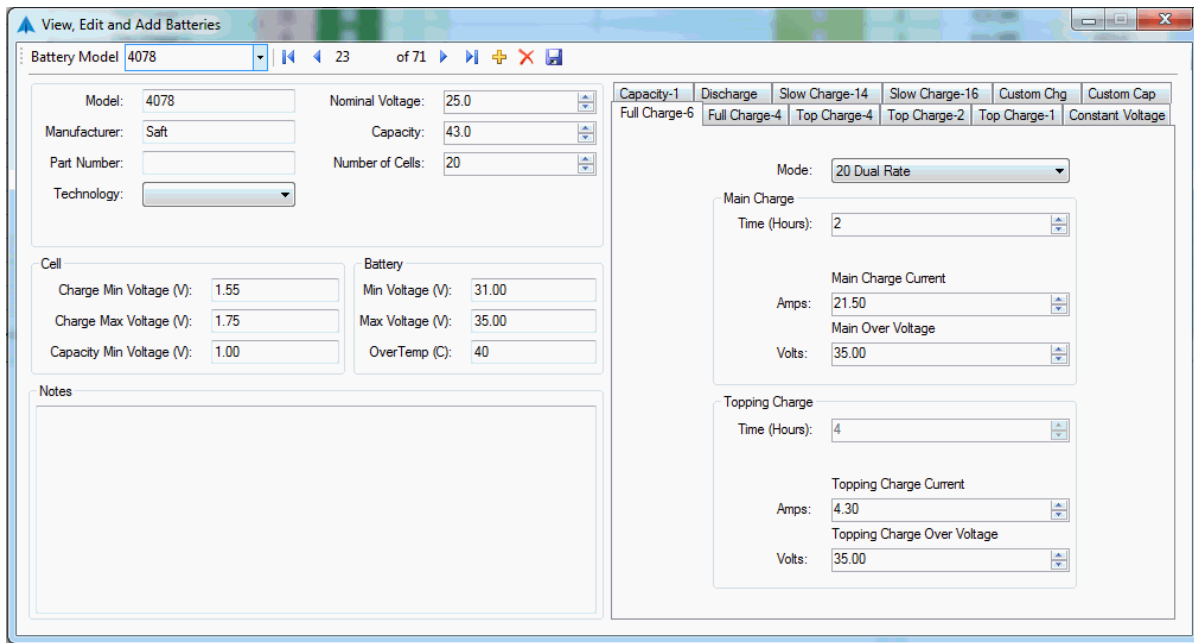


Figure 26 - Sample Battery Model and six hour Charge Test Parameters

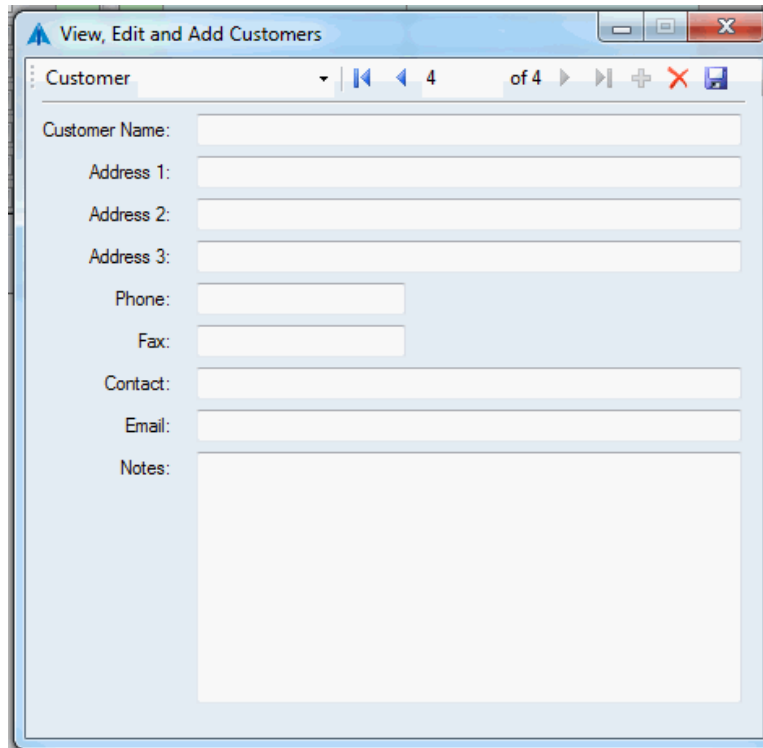
4.3 Customers

4.3.1. Enter the Customers Information

Note: Customers must be entered in the database before Work Orders can be created

4.3.2. Enter the Customer Name

4.3.3. Other information is optional



The screenshot shows a software window titled "View, Edit and Add Customers". At the top, there is a navigation bar with a dropdown menu currently set to "Customer". To the right of the dropdown are several navigation icons (back, forward, search, etc.) and the text "4 of 4". Below the navigation bar, the form contains the following fields:

- Customer Name: [Text Input]
- Address 1: [Text Input]
- Address 2: [Text Input]
- Address 3: [Text Input]
- Phone: [Text Input]
- Fax: [Text Input]
- Contact: [Text Input]
- Email: [Text Input]
- Notes: [Large Text Area]

Figure 27 - Screen for the entry of Customer Information

4.4 Operators List

- 4.4.1. From the Options Pull Down, open View, Edit and add Technicians (select + to add a new record).

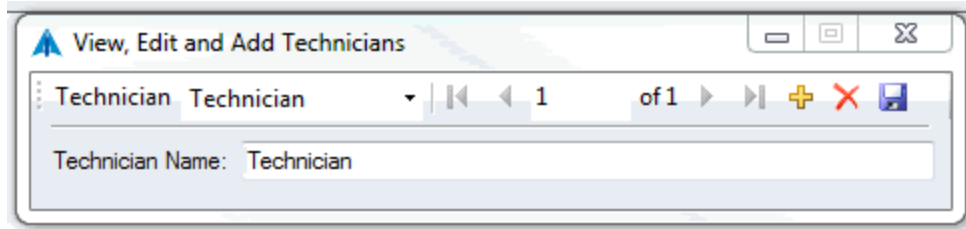


Figure 28 - Screen to enter/edit the names of the system operators

4.5 Add Customer Batteries

Note: Customers Batteries must be entered in the database before Work Orders can be created

- Click on Manage Customer Batteries and enter the Customer Battery Information - see [Figure 29].
- Click The Save Icon (Diskette Icon) when finished.

4.5.1. Battery Model

Select the Battery Model from the Manage Batteries pull-down list

4.5.2. Serial Number

Enter the serial number as it appears in the battery nameplate

4.5.3. Customer

Enter the Customer Name.

4.5.4. Barcode

Enter the Barcode. If a Barcode is not used, leave it blank.

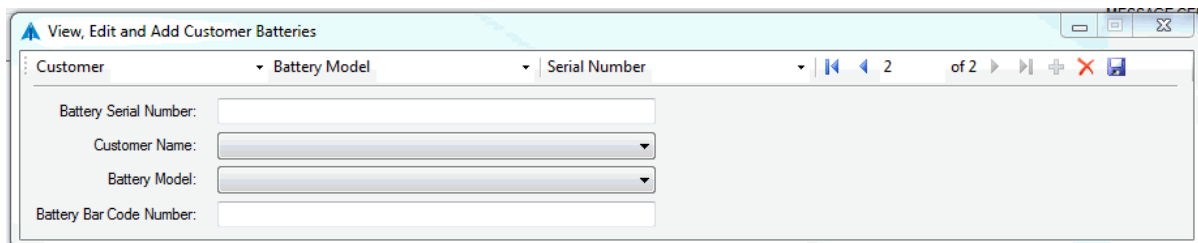


Figure 29 – View/Edit/Add Customer Battery Screen

4.6 Find Customer Batteries

- 4.6.1. Click the Manage Customer Batteries Menu Item.
- 4.6.2. Customer Batteries can be located by Customer, Battery Model, Bar Code and Serial Number.
- 4.6.3. Click on the Pull-Downs to see the lists.
- 4.6.4. Use the scroll arrows to navigate from record to record.

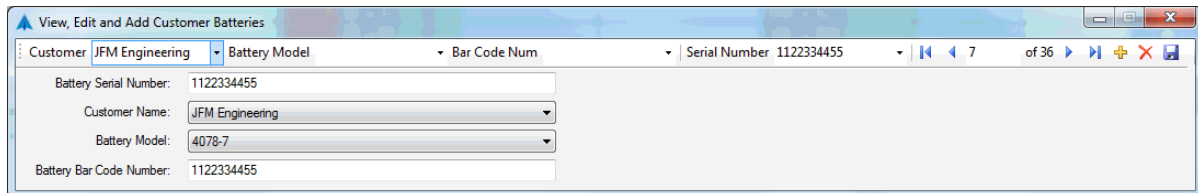


Figure 30 - Find Customer Battery Screen

5. Work Orders

5.1 Entering (creating) Work Orders

- 5.1.1. Click the **Manage Work Orders** Menu Item.
- 5.1.2. Search by the Customer or Serial Number
- 5.1.3. Select the Battery
- 5.1.4. Note that the Battery Information is already populated (not editable in this screen)

Step Number	Test Name	Notes
-------------	-----------	-------

Figure 31 - Screen to enter information into a new Work Order

- 5.1.5. In the Work Order screen, enter the following information:
 - Work Order Number
 - Enter a new Date Received if different from the Date shown
 - Aircraft Type (optional)
 - Tail Number (optional)
 - Select Test Requested (pull down)
 - Notes (optional)
- 5.1.6. When all basic information has been entered click the **Save** (Diskette Icon) button to store the new Work Order or click the **Close** button to close the screen without entering the new Work Order.
- 5.1.7. Exit the screen by clicking **X** in the top right of the dialog.

5.2 Viewing and Editing Work Orders

- 5.2.1. Click the Manage Work Orders Menu item (top tool bar)
- 5.2.2. Search for the desired Work Order by the Customer/Serial Number/Work Order Number pull-downs
Note that if a Work Order is assigned (entered into the main grid), the work order will not be editable.
Note also that editing information may conflict with prior generated data
- 5.2.3. Edit information as required
- 5.2.4. Click on the Diskette icon to save the information
- 5.2.5. Click X to exit the screen

5.3 Closing Work Orders

- 5.3.1. Click the Manage Work Orders Menu item (top tool bar)
- 5.3.2. Search for the desired Work Order by the Customer/Serial Number/Work Order Number pull-downs.
- 5.3.3. Open the Status Pull-Down and select Close
- 5.3.4. Click on the Diskette icon to save the information

5.4 Deleting a Work Order

- 5.4.1. Click the Manage Work Orders Menu item (top tool bar)
- 5.4.2. Search for the desired Work Order
- 5.4.3. Click the red X icon to remove it
Note that deleting a Work Order will render its data unrecoverable

5.5 Selecting/deselecting the Work Order

- 5.5.1. Single Work Order (One battery connected to the C-Scan)
- Click on the Work Order section of the desired station
 - The Select Work Orders Screen will come up showing available work orders (all work orders with a status of Open)

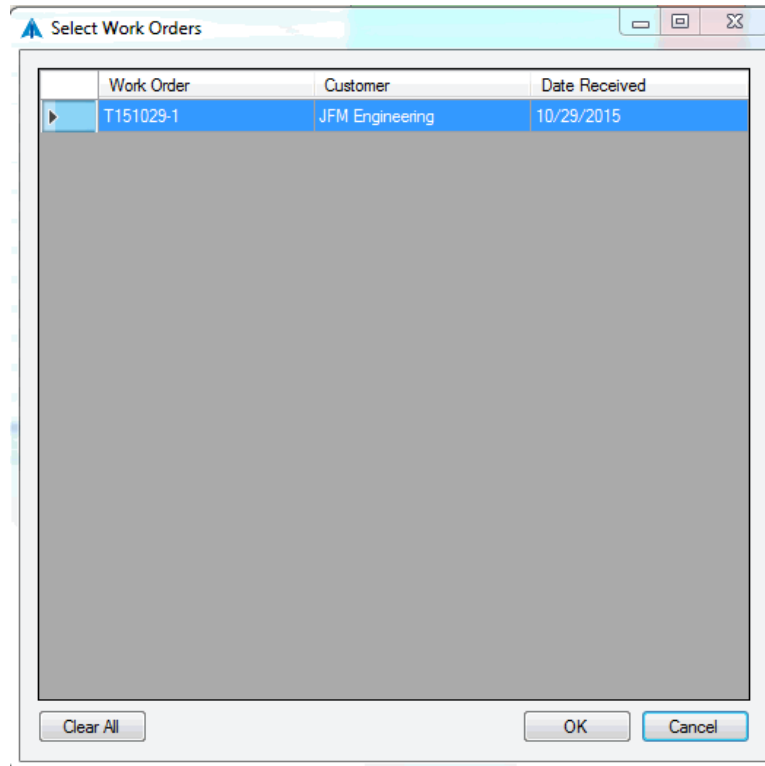


Figure 32 - Screen to select Work Orders

- Search for the desired Work Order (scroll down if needed) or Create a New Work Order through the Manage Work Orders menu item.
- Highlight the Work Order in the Work Orders List. Then, click the OK button. The selected Work Order will appear in the small box. See [Figure 33]

	DT#	Work Order	Test
	0		
▶	1	T151029-1	
	2		
	3		
	4		
	5		

Figure 33 – Work Order assigned on DT #1

5.5.2. Multiple Work Orders (More than one battery connected to one C-Scan and one Charger-Analyzer).

Note: more than one battery in one C-Scan implies that the combined number of cells is no greater than 24 (the S-Can can work with one battery up to 24 cells, two batteries up to 12 cells each and three batteries up to 8 cells each – special cables required).

5.5.2.1. Search for the desired Work Orders.

5.5.2.2. Highlight the first Work Order in the Work Orders List then hold down the Ctrl button and select the second work order. Click the OK button. The selected Work Orders will appear in the main grid.

	DT#	Work Order	Test
	0		
▶	1	T151221-1 T151221-2	
	2		
	3		

Figure 34 – Two Work Orders in the same C-Scan

5.5.3. Two C-Scans used with one Charger-Analyzer (two Work Orders)

When testing more than one battery using a single Charger-Analyzer (i.e. two 20 cell batteries) two C-Scans must now be associated with the Charger-Analyzer.

The C-Scan for the first one is the Master and the second one is the Slave.

With this configuration, the “Master” will be controlling the Charger-Analyzer (if a CCA) and it will be reading the current from the Charger-Analyzer and the battery temperature from the Temp-plate. The second C-Scan, the Slave, will only record voltage information from the battery that it is attached to.

- In addition, each of the batteries will have its own Work Order.
- Per figures [Figure 35] and [Figure 36], associate the Master C-Scan with Battery #1 and the Slave C-Scan with Battery #2.

DT#	Work Order	Test	Step	In Use	Record	E-Time	Recording Status	Link C.	CID	Charger Type	Charger Status	Auto Config
0				<input type="checkbox"/>	<input type="checkbox"/>			<input type="checkbox"/>				<input type="checkbox"/>
1	T151221-1			<input checked="" type="checkbox"/>	<input type="checkbox"/>			<input type="checkbox"/>	1-M	ICA SMC	RESET	<input type="checkbox"/>
2	T151221-2			<input checked="" type="checkbox"/>	<input type="checkbox"/>			<input type="checkbox"/>	1-S	ICA SMC	RESET	<input type="checkbox"/>
3				<input type="checkbox"/>	<input type="checkbox"/>			<input type="checkbox"/>				<input type="checkbox"/>

Figure 35 - Data Terminals #1 (Master) and #2(Slave) are associated with Charger-Analyzer #1

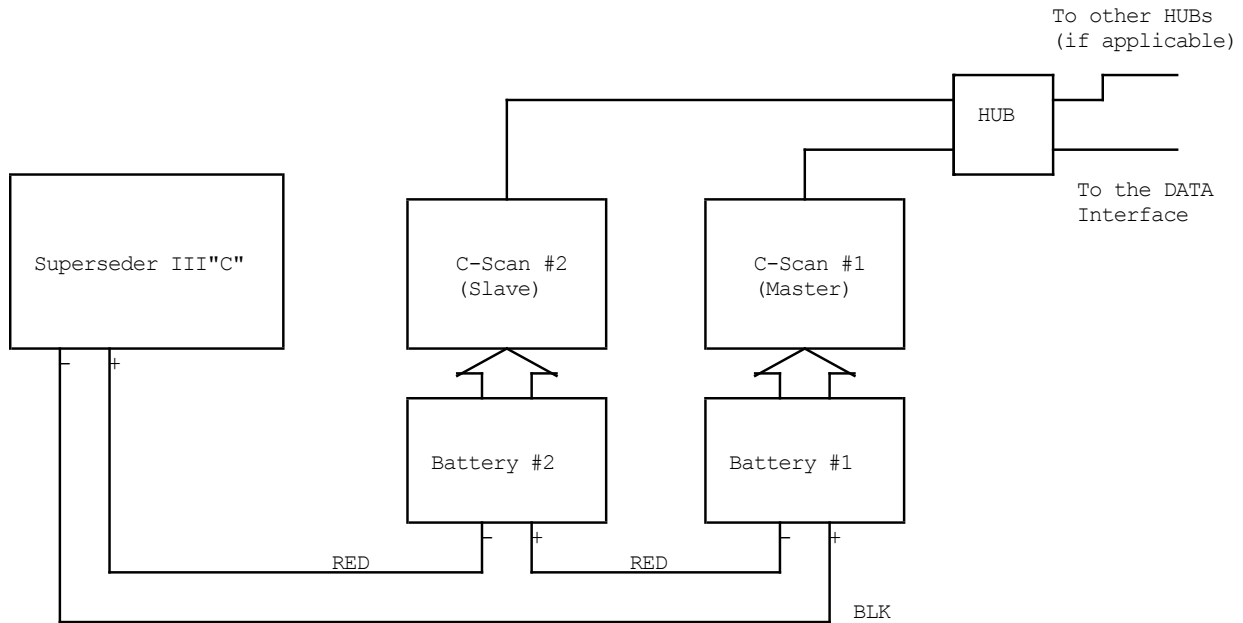


Figure 36 - Two C-Scan with one Charger-Analyzer

6. Data Acquisition (to take battery readings)

6.1 Connecting a Nickel-Cadmium Battery

Connection to the battery by way of a Universal Cell Cable with clips or with a battery specific Crown.

Note that when connecting a Universal Cell Cable or a Crown, the C-Scan will recognize what is connected to it and will display its description in the upper section of the right hand window (i.e. 20 Cell Cable, 2x11 Crowns, etc.) – see [Figure 37]

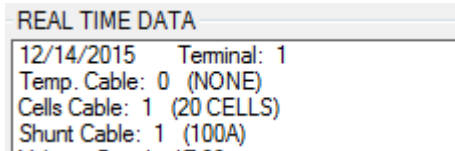


Figure 37 - Screen showing information on cables detected

6.1.1. Using Cell Clips

- Select a Cells Cable with clips consistent with the number of cells of the battery. Connect the Cells Cable to the C-Scan via the 50-conductor ribbon cable.
- Connect the BLK clip to the most negative side of the battery (negative post of the first cell) and connect the remaining cell clips to the corresponding cells positive post.
Note: cells are numbered from the most negative terminal.
Under OPTIONS the cell order can be reversed but this is for display and reporting purposes only. Internally, the most negative remains as cell #1
- Monitor the Cell voltages in the bottom left side of the screen to verify that all cells are connected properly as per [6.2]

6.1.2. Using a Crown

- Select a Crown consistent with the battery type
- Connect to the C-Scan via the 50-conductor ribbon cable.
- Monitor the Cells voltages in the bottom left side of the screen to verify that all cells are reading properly as per [6.2]

6.2 Testing the connection

6.2.1. Select the cells order.

- The BTAS16 allows for cells to be numbered from the most negative side or from the most positive side of the battery.
Note: Internally, all data is referenced from the most negative terminal; what changes is how it is displayed.
- Open the options menu and select the required order
- Note: All examples are shown from the most negative side.

6.2.2. After the C-Scans have been connected to the battery, verify that all connections are proper by viewing the Bar Graph (bottom screen) and the cell voltage readings (right screen). Any bars, which are red, or with an abnormally high value, may indicate an error.

6.2.3. If any of the cells read full scale (2V) and negative, it indicates that a connection is open and or reversed.

Note: A cell with a true negative voltage will display without a corresponding overscale bar (this is a true reading!).

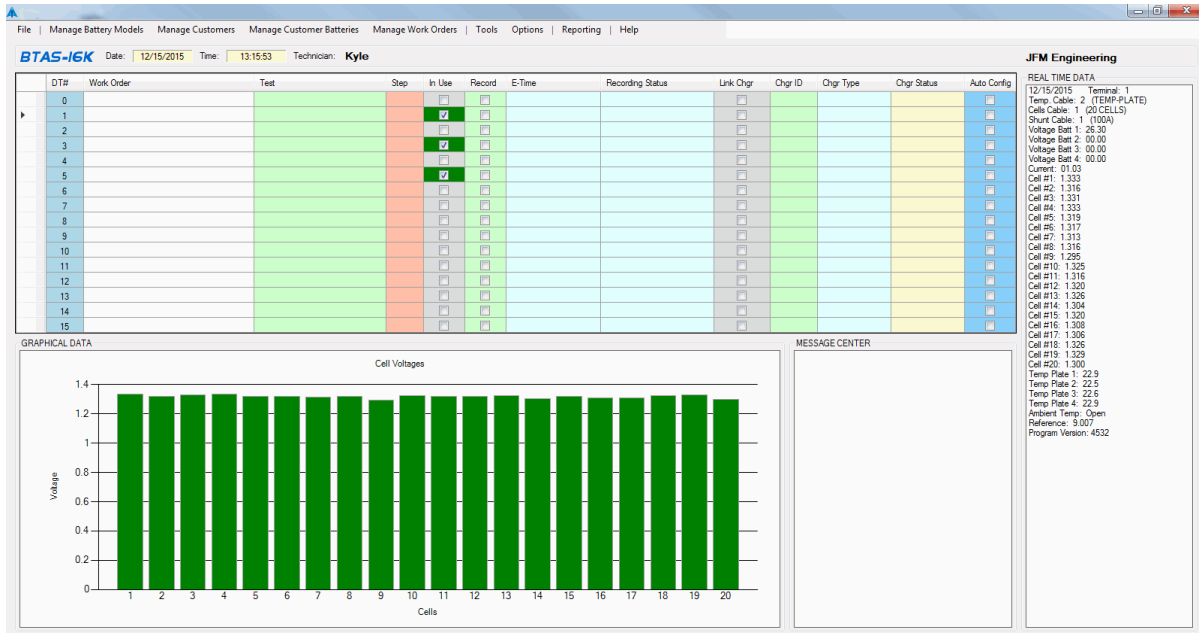


Figure 38 - Main Screen showing information from various Data Terminals

6.2.4. Bar graph showing the effect of the Common lead disconnected

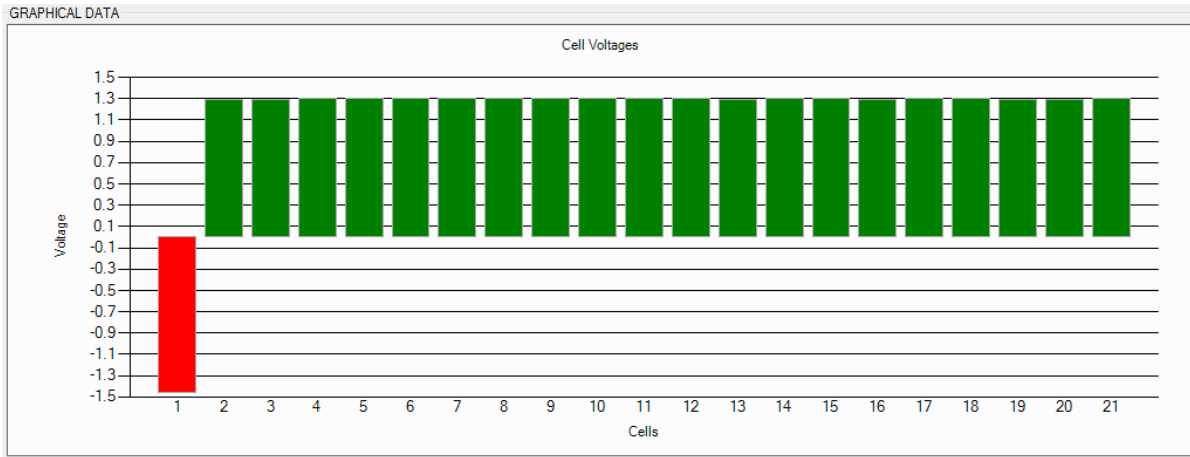


Figure 39 - Common lead disconnected

6.2.5. Bar Graph showing cells 1-4 connected
Note that cell #5 is also affected

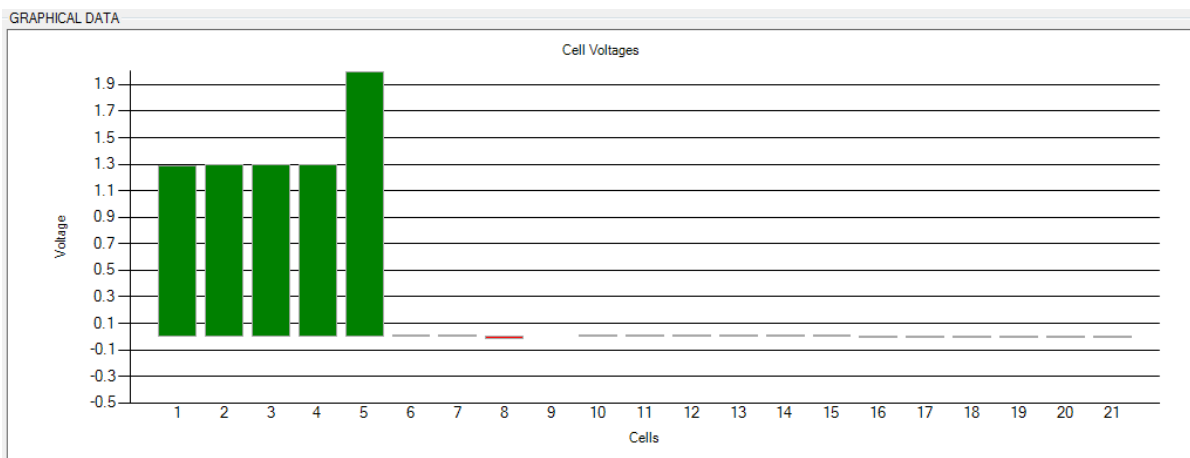


Figure 40 – Cells 1-4 connected

6.2.6. Bar Graph showing cells 1-8 connected with #7 and #8 reversed

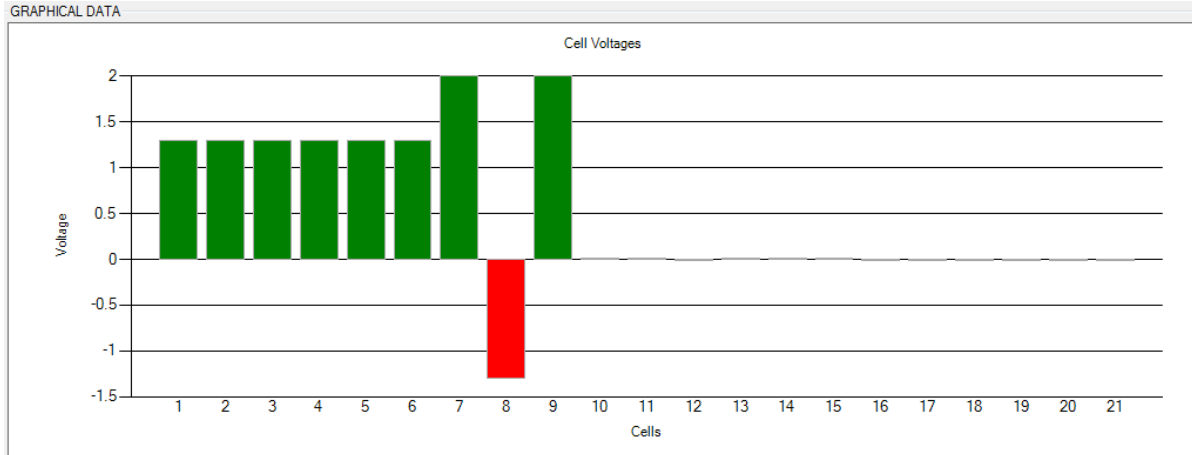


Figure 41 – Cells 1-8 connected with #7 and #8 reversed

6.2.7. Bar Graph showing Cells 1-16 connected with #14 connected with #15

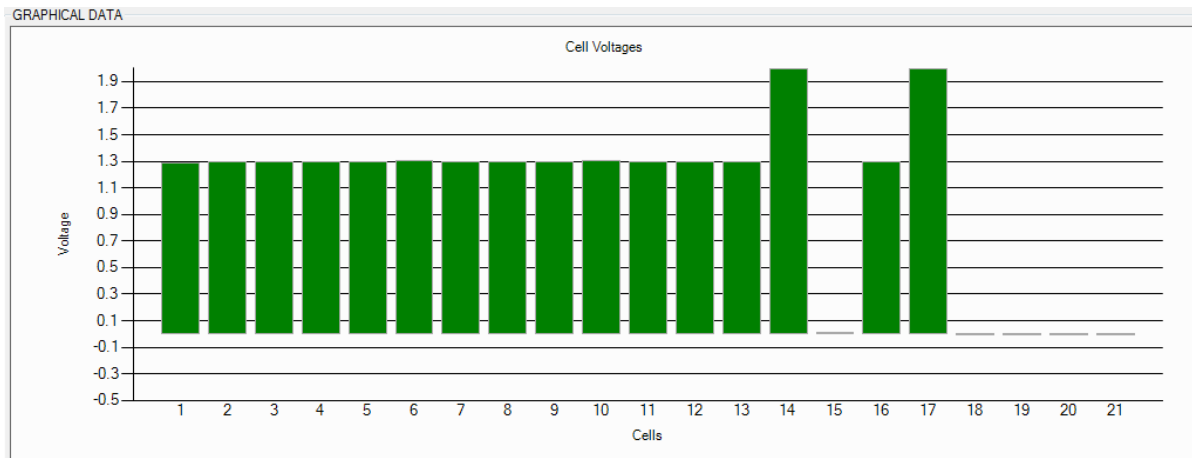


Figure 42 – Cells 1-16 connected with #14 connected to #15

6.3 Connecting a Battery with no blocks or cell terminals

Connection to the battery(ies) by way of a Four Battery Cable (with clips – two clips for each of the batteries), as applicable to small battery packs or sealed Lead-Acid batteries where there is no access to cells.

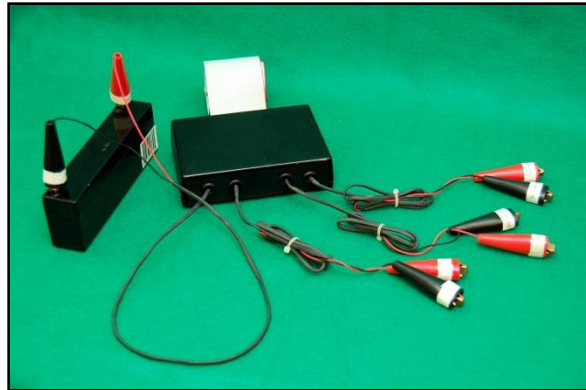


Figure 43 – Four Battery Cable

- Note that when connecting this cable, the C-Scan will recognize it as cable #10 – see [Figure 46]
- See [Figure 44] and [Figure 45] for samples of batteries with no accessible blocks/cells



Figure 44 – SLA Battery with no accessible block terminals



Figure 45 – Nickel-Cadmium Battery with no accessible cell terminals

- The Shunt Cable shown will correspond to the type of Charger being used

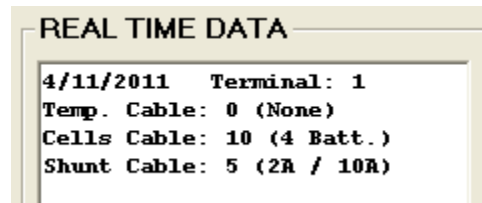


Figure 46 - Screen showing information on cables detected

6.3.1. Connecting the Four Battery Cable to one or more small Battery Packs

For this application you can connect one, two, three, or four packs in series depending on the total voltage capability of the Charger being used.

- Connect each of the clip pairs to each of the batteries being tested.
- Monitor each of the battery voltages in the REAL TIME DATA Screen.
- See [Figure 47]

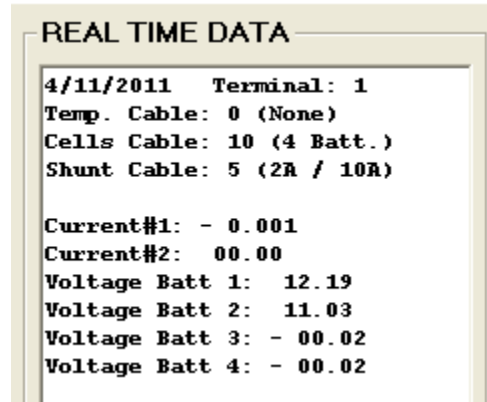


Figure 47 - Screen showing information on two batteries connected

6.3.2. Connecting the Four Battery Cable to one or two mainship batteries.

For this application you can connect one or two mainship batteries in series depending on the total voltage capability of the Charger being used.

- Connect each of the clip pairs to each of the batteries being tested.
- Monitor each of the battery voltages in the REAL TIME DATA Screen.

6.3.3. Connecting the Four Battery Cable to one battery with accessible blocks/terminals.

This is applicable for batteries where the individual block connections become available after removing the lid.

- Battery #1 can be used to measure the entire battery while Battery #2 and #3 can be used to monitor each block individually (Battery #4 is not used).
- See [Figure 48] for a battery with available blocks and terminals
Monitor each of the battery voltages in the REAL TIME DATA Screen.



Figure 48 – SLA Battery with accessible blocks

6.4 Programming the Test

- 6.4.1. Click on the Test section
- 6.4.2. Select the Test from the pull down menu

6.5 Recording the Test Data

- 6.5.1. Activate the station, if not already activated, in the In Use section.
- 6.5.2. A check mark will appear and the region will turn green if the C-Scan is found.
- 6.5.3. Click on Link if the Charger-Analyzer is equipped for it.
- 6.5.4. Setup the Charger-Analyzer for the test to be performed or allow the program to load the Test Parameters if it is an Intelligent Charger-Analyzer.
- 6.5.5. When an Intelligent Charger-Analyzer (ICA) is connected, the BTAS program checks for consistency between the Test selected in the Main Screen and the Mode programmed in the ICA. If an inconsistency is detected an error message is generated.
- 6.5.6. At this point you can active a test by clicking the Record check box.
 - The Recording Status column will indicate that a test is starting.
 - The Charger-Analyzer will start.
- 6.5.7. The Status section will indicate the number of readings taken and the total number of readings.
- 6.5.8. The E-time section will indicate the Elapsed Time in hours, minutes and seconds.
- 6.5.9. The Battery Voltage, Cell Voltages, Battery Current and the Battery Temperature (if the Temp-Plate option is installed) will be reflected in the real time data portion of the program.

	DT#	Work Order	Test	Step	In Use	Record	E
	0				<input type="checkbox"/>	<input type="checkbox"/>	
▶	1	T151221-1	Capacity-1		<input checked="" type="checkbox"/>	<input type="checkbox"/>	
	2				<input type="checkbox"/>	<input type="checkbox"/>	
	3				<input type="checkbox"/>	<input type="checkbox"/>	
	4				<input type="checkbox"/>	<input type="checkbox"/>	

Figure 49 - Recording test data

6.6 Sample Screens

6.6.1. As received, battery in poor charge condition

- Red indicates cells under 1.2V
- Orange indicates cells between 1.2V and 1.25V
- Green indicates 1.25V or above

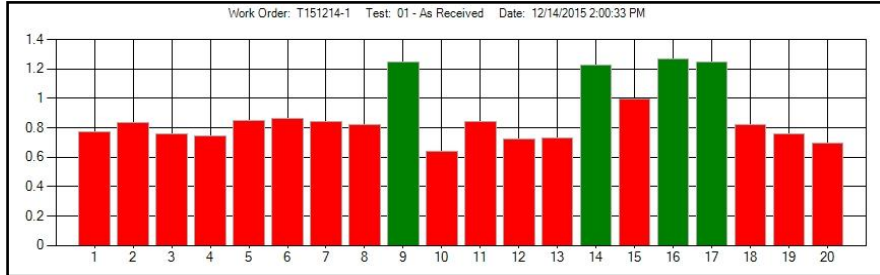


Figure 50 - Battery cells with colors for “AS RECEIVED”

6.6.2. Beginning of charge

- Yellow indicates cells under 1.2V
- Orange indicates cells between 1.2V and less than 1.25V
- Green indicates 1.25V or above

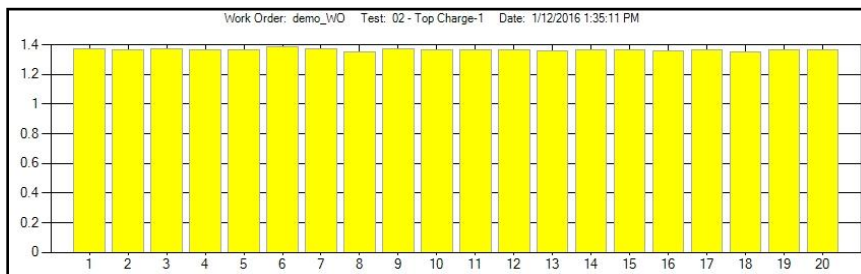


Figure 51 - Cells voltages of a battery at the beginning of “CHARGE”

6.6.3. **Battery during the middle of a charge**

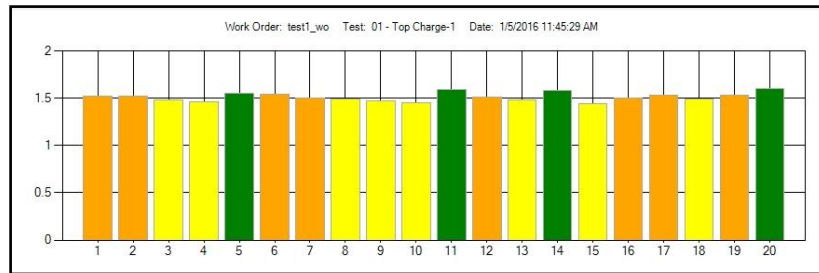
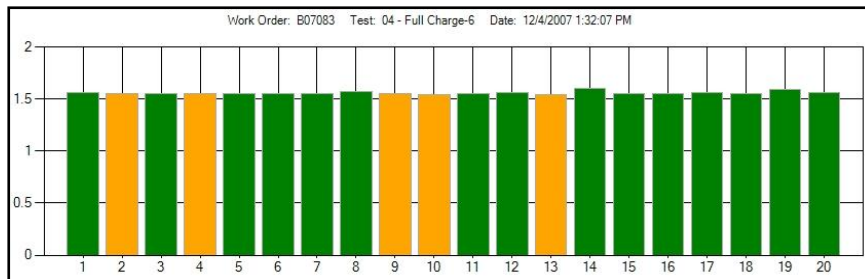


Figure 52 - Battery shown further along in “CHARGE”

6.6.4. **Battery nearing the end of charge**



**Figure 53 - Battery nearing the end of “CHARGE”
(higher cell voltages)**

6.6.5. Battery that underwent capacity failure

- Red indicates less than 1V or reversed
- Orange indicates between 1.00V and 1.05V (marginal capacity)
- Green indicates 1.05V or greater

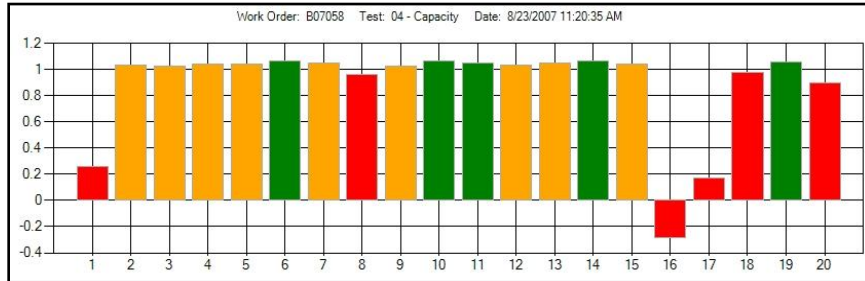


Figure 54 - Screen showing bar colors for the cells of a battery that failed "Capacity"

6.7 Stopping the Test

Click in the **Rec.** section. A message screen will come up confirming that the readings will be stopped.

6.8 Resuming the Test

Click in the **Rec.** section. A message screen will come up asking if you wish to re-start the Test, or to start a new one.

6.9 Viewing Real Time Graphical Results (Main Screen)

The Bar Graph display can be selected to show Battery or Cell information via the respective pull down selection

6.9.1. The Battery information consists of Battery Voltage vs. Time, Battery Current vs. Time and Battery Temperature vs. Time.

- Battery voltage during discharge.
The color change indicates the transition into “Capacity Failure”

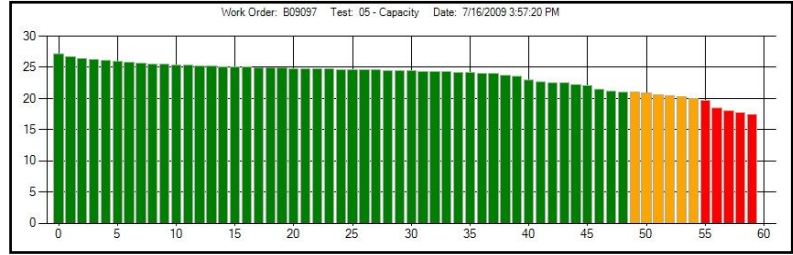


Figure 55 - Screen showing battery voltage vs. time. Note the color change as the battery fails capacity

6.9.2. The Cell information consists of Real Time Cell Voltages (all cells) and Individual Cell Voltages vs. Time

Individual cell during discharge

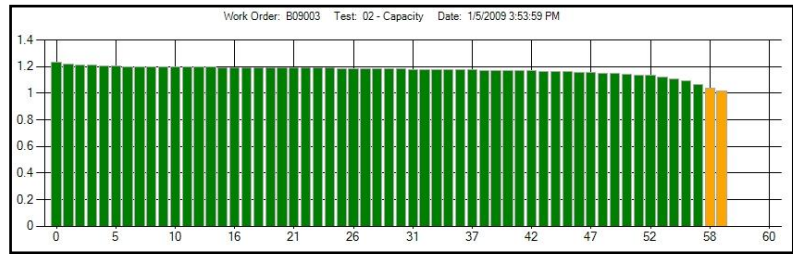


Figure 56 - Screen showing a cell voltage vs. time during capacity testing

6.10 Viewing Graphical Results

6.10.1. Click on **Graphs** and select the desired Work Order

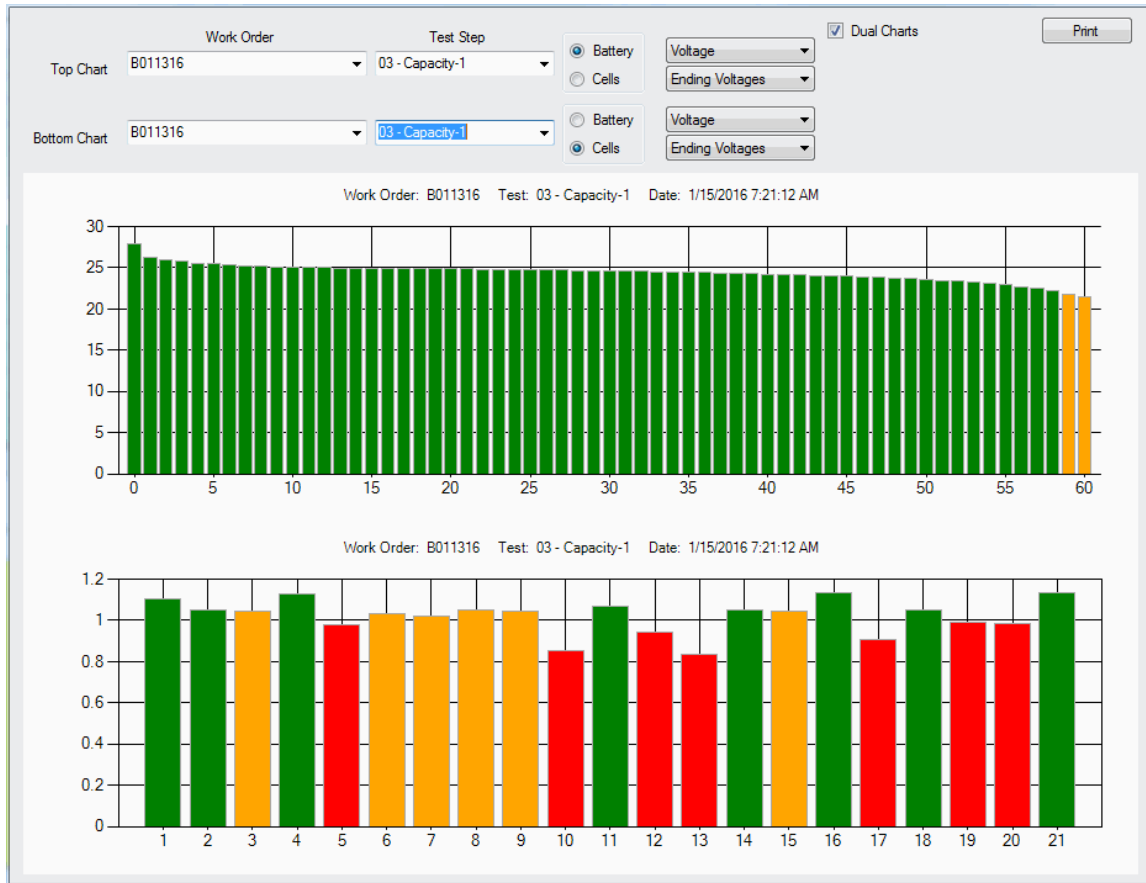


Figure 57 - Graphical Comparison Screen; Battery Voltage and Cell Voltages

- 6.10.2. Select Dual Charts to compare results
- 6.10.3. Select the WORK ORDER from the pull down
- Top Chart for only one result
 - Top and Bottom Chart for results comparison
- 6.10.4. Select the TEST STEP from the pull down
- Top Chart for only one result
 - Top and Bottom Chart for results comparison (e.g. First and Second Capacity Test)
- 6.10.5. Select BATTERY or CELLS data
- Select BATTERY to view battery data such as Voltage, Current or Temperature
 - Select CELLS to view cells data such as All Cell Voltages or individual Cell Voltage (by cell number)

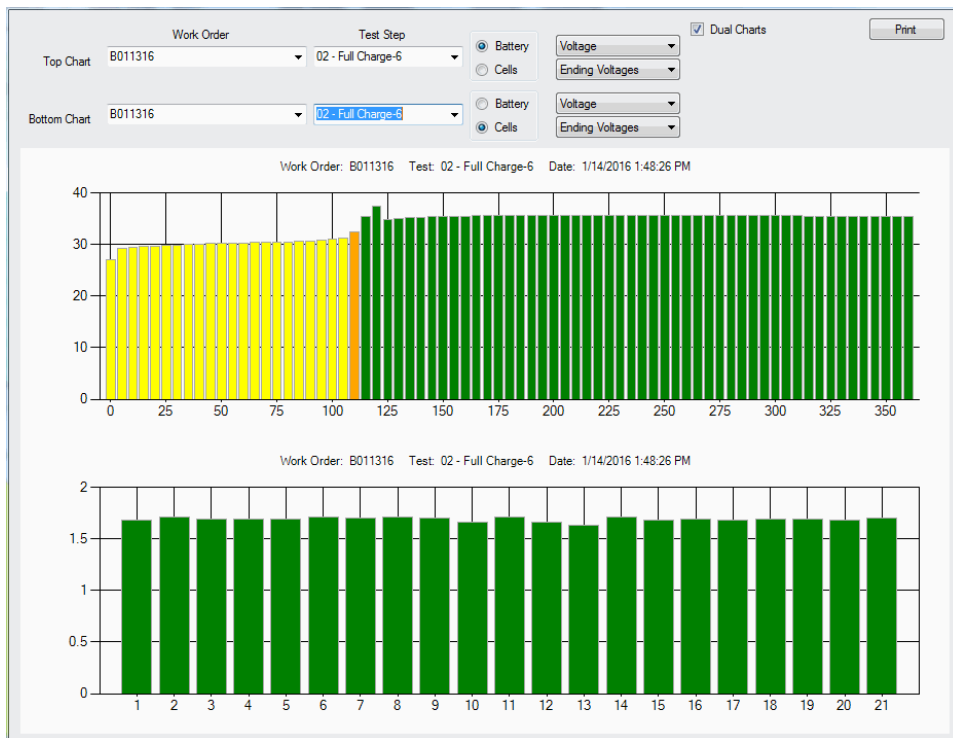


Figure 58 - Comparison Screen; Charge Voltage and Cell Voltages

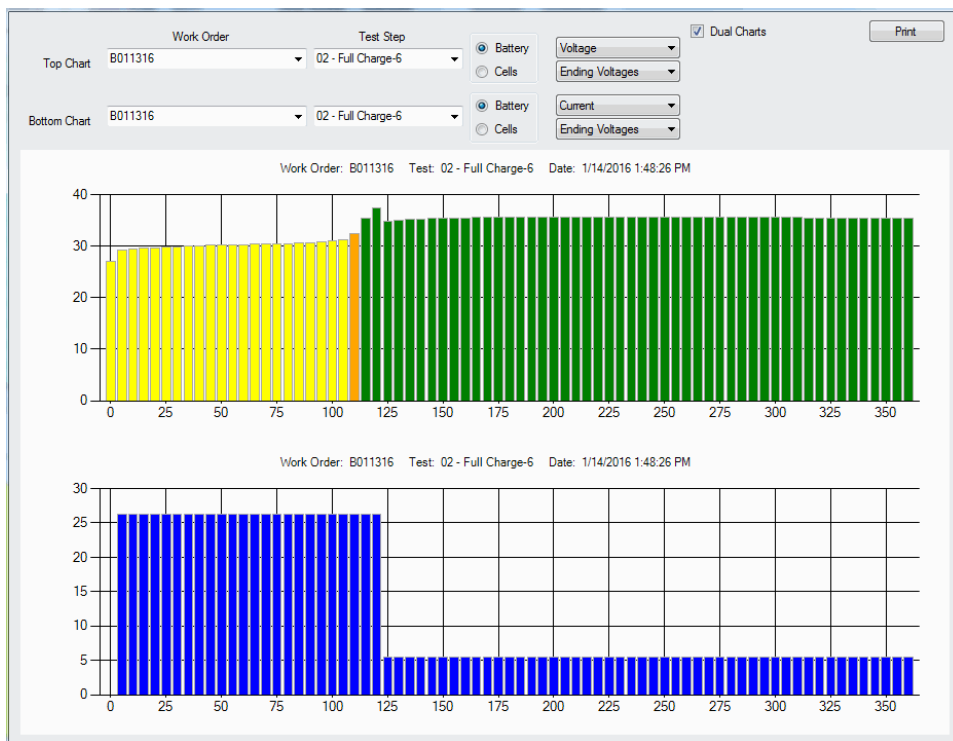


Figure 59 - Comparison Screen; Charge Voltage and Charge Current

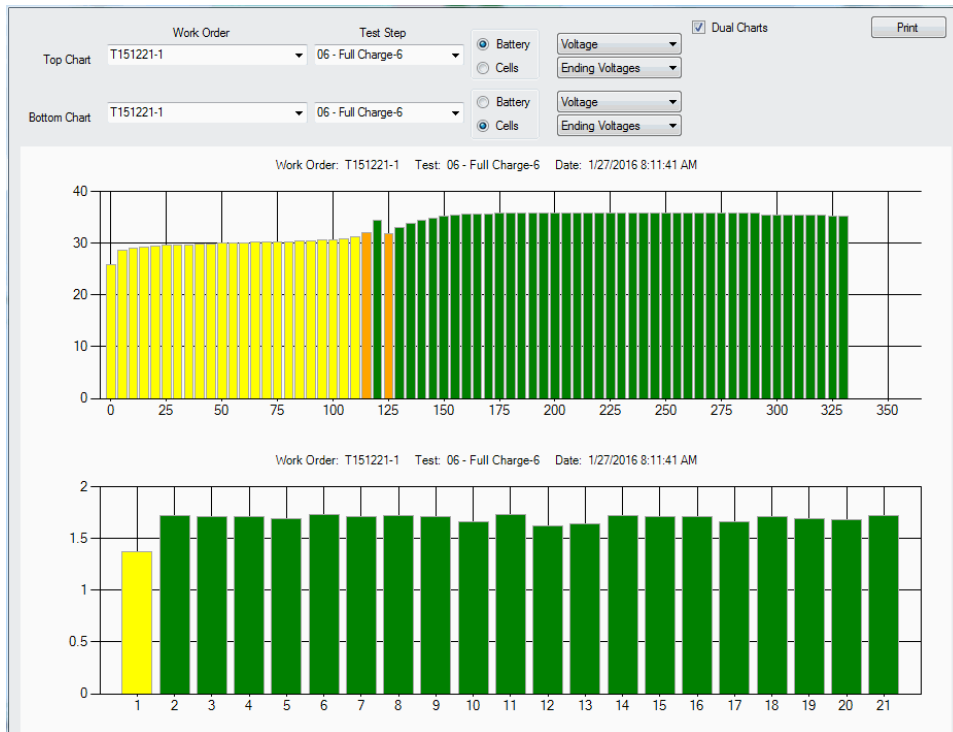


Figure 60 - Charge Voltage with Cell Voltages

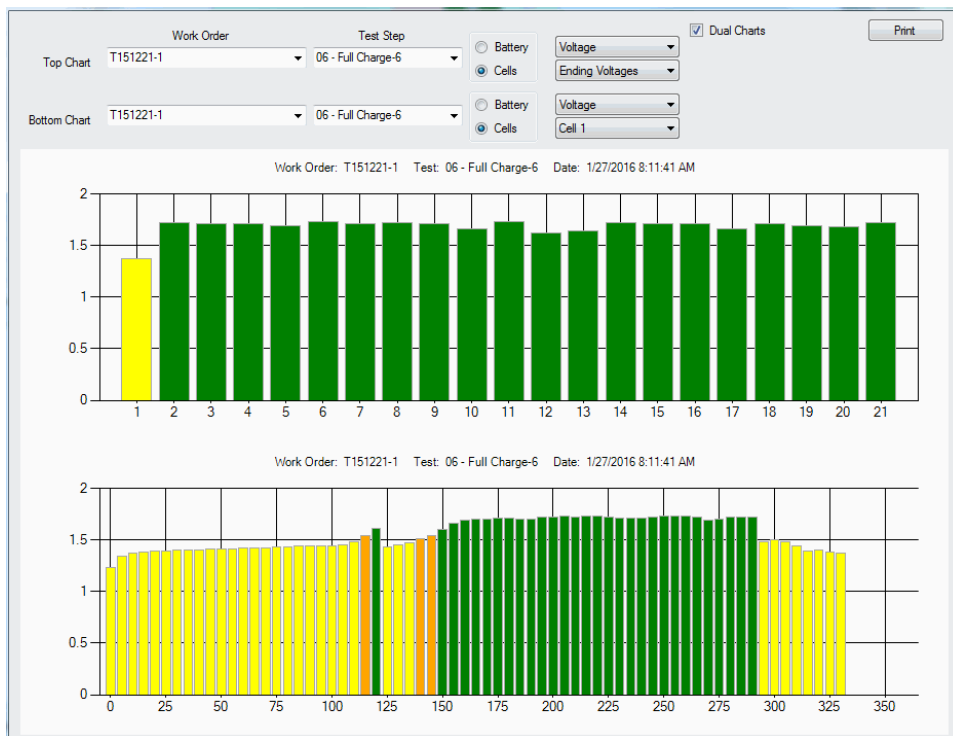


Figure 61 – Cell Voltages and individual Cell with voltage drop

6.11 Viewing Numerical Results

- 6.11.1. Click on **Reporting** to open the pull-down for the various numerical reports and graphs
- 6.11.2. Select Battery Reports to see Battery Test History by battery Serial Number
- 6.11.3. Select Test Reports for numerical results on different tests performed by Work Order
- 6.11.4. Select Work Orders for the Summary Report on a battery by model/serial number

JFM
Work Order: 8011316 Work Order Log
1/13/2016 2:42:49 PM

Test Performed	Time Started	Time Completed	Station	Charger	Technician	Notes
01 Capacity-1	1/13/2016 2:42:44 PM	1/13/2016 3:42:14 PM	1	ICA SMC	Joe	
02 Full Charge-6	1/14/2016 1:48:13 PM	1/14/2016 7:48:41 PM	1	ICA SMC	Technician	
03 Capacity-1	1/15/2016 7:21:07 AM	1/15/2016 8:21:27 AM	1	ICA SMC	Technician	

Figure 62 – Work Order Log

JFM

Battery History Report
Serial Number: 40885044

Work Order Number	Customer Name	Battery Model	Serial Number	Date Received	Date Completed	Test Requested	Order Status	Notes
T151221-1	JFM Engineering	5317	40885044	12/21/2015	12/21/2015	Deep Cycle	Active	SystemTest

Figure 63 – Battery History Report

JFM

Terminal # 1
Work Order: B011316
Step: 01 - Capacity1
Cells Order: Neg. to Pos.

C-Scan DATA Report
1/13/2016 2:42:49 PM
Cells Cable: 21
Charger: ICA SMC

Shunt Cable: 1
Temp Cable: 1
Technician: Technician

RD	ETIME	C01	C02	C03	C04	C05	C06	C07	C08	C09	C10	C11	C12	C13	C14	C15	C16	C17	C18	C19	C20	C21
1	00:00:00	1.31	1.31	1.31	1.31	1.31	1.31	1.31	1.31	1.31	1.31	1.31	1.30	1.31	1.31	1.31	1.31	1.31	1.31	1.31	1.31	1.30
2	00:01:00	1.23	1.21	1.21	1.23	1.21	1.21	1.20	1.22	1.22	1.22	1.20	1.19	1.21	1.23	1.23	1.18	1.22	1.20	1.20	1.23	1.23
3	00:02:00	1.22	1.19	1.19	1.21	1.19	1.19	1.18	1.20	1.20	1.20	1.18	1.17	1.20	1.21	1.22	1.16	1.20	1.18	1.18	1.18	1.22
4	00:03:00	1.20	1.18	1.18	1.20	1.17	1.18	1.17	1.18	1.18	1.18	1.19	1.17	1.15	1.18	1.20	1.20	1.15	1.19	1.17	1.17	1.20
5	00:04:00	1.20	1.17	1.17	1.19	1.17	1.17	1.16	1.17	1.17	1.18	1.18	1.16	1.14	1.17	1.19	1.20	1.14	1.18	1.16	1.16	1.20
6	00:05:00	1.19	1.16	1.17	1.19	1.16	1.16	1.15	1.17	1.17	1.17	1.17	1.15	1.14	1.17	1.18	1.19	1.14	1.18	1.16	1.15	1.19
7	00:06:00	1.19	1.16	1.16	1.18	1.15	1.16	1.15	1.16	1.16	1.17	1.17	1.15	1.13	1.16	1.18	1.19	1.13	1.17	1.15	1.15	1.19
8	00:07:00	1.18	1.15	1.16	1.18	1.15	1.16	1.14	1.16	1.16	1.16	1.17	1.14	1.13	1.16	1.18	1.18	1.13	1.17	1.15	1.15	1.18
9	00:08:00	1.18	1.15	1.16	1.18	1.15	1.15	1.14	1.16	1.16	1.16	1.16	1.14	1.13	1.16	1.17	1.18	1.12	1.17	1.14	1.14	1.18
10	00:09:00	1.18	1.15	1.15	1.18	1.15	1.15	1.14	1.15	1.15	1.16	1.16	1.14	1.12	1.16	1.17	1.18	1.12	1.17	1.14	1.14	1.18
11	00:10:00	1.18	1.15	1.15	1.18	1.14	1.15	1.14	1.15	1.15	1.16	1.16	1.13	1.12	1.15	1.17	1.18	1.12	1.16	1.14	1.14	1.18
12	00:11:00	1.18	1.15	1.15	1.18	1.14	1.15	1.14	1.15	1.15	1.16	1.16	1.13	1.12	1.15	1.17	1.18	1.12	1.16	1.14	1.14	1.18
13	00:12:01	1.18	1.14	1.15	1.17	1.14	1.15	1.14	1.15	1.15	1.15	1.16	1.13	1.12	1.15	1.17	1.18	1.11	1.16	1.14	1.14	1.18
14	00:13:00	1.17	1.14	1.15	1.17	1.14	1.15	1.14	1.15	1.15	1.15	1.16	1.13	1.12	1.15	1.17	1.18	1.11	1.16	1.14	1.13	1.18
15	00:14:00	1.17	1.14	1.15	1.17	1.14	1.14	1.13	1.15	1.15	1.15	1.16	1.13	1.11	1.15	1.17	1.18	1.11	1.16	1.13	1.13	1.18
16	00:15:00	1.17	1.14	1.15	1.17	1.14	1.14	1.13	1.15	1.15	1.15	1.16	1.13	1.11	1.15	1.17	1.18	1.11	1.16	1.13	1.13	1.18
17	00:16:00	1.17	1.14	1.14	1.17	1.14	1.14	1.13	1.14	1.14	1.15	1.15	1.12	1.11	1.15	1.16	1.18	1.11	1.16	1.13	1.13	1.18
18	00:17:00	1.17	1.14	1.14	1.17	1.14	1.14	1.13	1.14	1.14	1.14	1.15	1.15	1.12	1.11	1.15	1.16	1.17	1.11	1.16	1.13	1.18
19	00:18:00	1.17	1.14	1.14	1.17	1.13	1.14	1.13	1.14	1.14	1.15	1.15	1.12	1.11	1.14	1.16	1.17	1.11	1.16	1.13	1.13	1.18
20	00:19:00	1.17	1.14	1.14	1.17	1.13	1.14	1.13	1.14	1.14	1.15	1.15	1.12	1.10	1.14	1.16	1.17	1.10	1.16	1.13	1.13	1.18
21	00:20:00	1.17	1.14	1.14	1.17	1.13	1.14	1.13	1.14	1.14	1.14	1.15	1.12	1.10	1.14	1.16	1.17	1.10	1.15	1.13	1.12	1.18
22	00:21:00	1.16	1.13	1.14	1.16	1.13	1.14	1.13	1.14	1.14	1.14	1.15	1.12	1.10	1.14	1.16	1.17	1.10	1.15	1.13	1.12	1.18
23	00:22:00	1.16	1.13	1.14	1.16	1.13	1.14	1.12	1.14	1.14	1.14	1.15	1.12	1.10	1.14	1.16	1.17	1.10	1.15	1.12	1.12	1.18
24	00:23:00	1.16	1.13	1.14	1.16	1.13	1.14	1.12	1.14	1.14	1.14	1.15	1.11	1.10	1.14	1.16	1.17	1.10	1.15	1.12	1.12	1.18
25	00:24:00	1.16	1.13	1.14	1.16	1.13	1.13	1.12	1.13	1.13	1.14	1.14	1.11	1.10	1.14	1.15	1.17	1.09	1.15	1.12	1.12	1.18
26	00:25:00	1.16	1.13	1.13	1.16	1.13	1.13	1.12	1.13	1.13	1.14	1.14	1.11	1.10	1.14	1.15	1.17	1.09	1.15	1.12	1.12	1.18

Figure 64 – Cell Data

JFM																											
Terminal # 1										C-Scan DATA Report																	
Work Order: B011316										1/13/2016 2:42:49 PM																	
										Cells Cable: 21						Shunt Cable: 1						Temp Cable: 1					
Cells Order: Neg. to Pos.										Charger: ICA SMC						Technician: Technician											
01	Test Name			Date Started				Date Completed				Station		Charger				Technician				Notes					
	Capacity-1			1/13/2016 2:42:44 PM				1/13/2016 3:42:14 PM				1		ICA SMC				Joe									
	E-Time	C01	C02	C03	C04	C05	C06	C07	C08	C09	C10	C11	C12	C13	C14	C15	C16	C17	C18	C19	C20	C21					
	0:51	1.12	1.09	1.08	1.13	1.06	1.09	1.07	1.09	1.09	1.03	1.11	1.04	0.98	1.10	1.08	1.13	1.01	1.10	1.07	1.06	1.14					
	Test Name			Date Started				Date Completed				Station		Charger				Technician				Notes					
	Capacity-1			1/13/2016 2:42:44 PM				1/13/2016 3:42:14 PM				1		ICA SMC				Joe									
	E-Time	C01	C02	C03	C04	C05	C06	C07	C08	C09	C10	C11	C12	C13	C14	C15	C16	C17	C18	C19	C20	C21					
	0:57	1.04	1.05	1.04	1.10	1.00	1.05	1.02	1.06	1.05	0.82	1.08	0.98	0.84	1.07	1.01	1.10	0.92	1.06	1.02	0.99	1.13					
02	Test Name			Date Started				Date Completed				Station		Charger				Technician				Notes					
	Full Charge-6			1/14/2016 1:48:13 PM				1/14/2016 7:48:41 PM				1		ICA SMC				Technician									
	E-Time	C01	C02	C03	C04	C05	C06	C07	C08	C09	C10	C11	C12	C13	C14	C15	C16	C17	C18	C19	C20	C21					
	6:00	1.68	1.71	1.70	1.69	1.69	1.71	1.70	1.71	1.70	1.66	1.71	1.66	1.64	1.71	1.68	1.69	1.68	1.69	1.69	1.68	1.70					
03	Test Name			Date Started				Date Completed				Station		Charger				Technician				Notes					
	Capacity-1			1/15/2016 7:21:07 AM				1/15/2016 8:21:27 AM				1		ICA SMC				Technician									
	E-Time	C01	C02	C03	C04	C05	C06	C07	C08	C09	C10	C11	C12	C13	C14	C15	C16	C17	C18	C19	C20	C21					
	0:51	1.15	1.12	1.12	1.16	1.11	1.12	1.11	1.12	1.12	1.09	1.14	1.09	1.06	1.13	1.14	1.17	1.07	1.14	1.11	1.10	1.16					
	Capacity-1			1/15/2016 7:21:07 AM				1/15/2016 8:21:27 AM				1		ICA SMC				Technician									
	E-Time	C01	C02	C03	C04	C05	C06	C07	C08	C09	C10	C11	C12	C13	C14	C15	C16	C17	C18	C19	C20	C21					
	2:00	1.11	1.05	1.05	1.13	0.98	1.03	1.02	1.05	1.04	0.85	1.07	0.95	0.84	1.05	1.04	1.13	0.91	1.05	0.99	0.98	1.13					

Figure 65 – Work Order Summary

6.12 Printing results

6.12.1. Click on the **Printer** icon to print the data displayed



Figure 66 – Print Button

7. Charger-Analyzer Monitoring and Control

This is for the new Intelligent Charger-Analyzers (SupersederXG, SuperMasterCharger, 24-400XG, MiniMasterCharger and MFC-10) that communicate directly with the BTAS, for the monitoring and control of the SupersederIII/MasterChargerLXC that have the “C” modification and for other Charger-Analyzers that have a Shunt installed to monitor the Charger/Discharge Current.

7.1 Identification of Charger-Analyzers

Charger-Analyzers can be “Intelligent” (ICA), “Controllable” (CCA) or “Shunt”

If it sees a shunt connected (by the code in the connecting data cable) it knows that there is equipment connected and identifies it as follows:

- 7.1.1. In the absence of any other input it identifies the connection to a shunt which is the minimum requirement for the BTAS software to function. See DT1 in [Figure 67]. In [Figure 68] DT1 now recognizes that the equipment is an Intelligent Charger-Analyzer (ICA) and it reports that the unit is in the RESET state.
- 7.1.2. In DT2 the software recognizes an Intelligent Charger-Analyzer (ICA) and it reports that the unit is in the RESET state. In this case it is a SuperMini.
- 7.1.3. In DT9 the software reports that the Charger-Analyzer is off-line (cannot be controlled by the BTAS software). See in [Figure 68] that the Charger-Analyzer has been enabled and it now reports it as being in the RESET state.
- 7.1.4. In DT15 the software recognizes the unit as a Controllable Charger-Analyzer (CCA) and it reports that it as it on HOLD. See the checkmark in the column Link C. in [Figure 67]. In [Figure 68] DT15 not reports that the Charger-Analyzer is not controlled. Note that the Link C. check is now removed.

DT#	Work Order	Test	Step	In Use	Record	E-Time	Recording Status	Link C.	CID	Charger Type	Charger Status	Auto Config
0				<input type="checkbox"/>	<input type="checkbox"/>			<input type="checkbox"/>				<input type="checkbox"/>
1				<input checked="" type="checkbox"/>	<input type="checkbox"/>			<input checked="" type="checkbox"/>	1	Shunt		<input type="checkbox"/>
2				<input checked="" type="checkbox"/>	<input type="checkbox"/>			<input checked="" type="checkbox"/>	2	ICA SMI	RESET	<input type="checkbox"/>
3				<input type="checkbox"/>	<input type="checkbox"/>			<input type="checkbox"/>				<input type="checkbox"/>
4				<input type="checkbox"/>	<input type="checkbox"/>			<input type="checkbox"/>				<input type="checkbox"/>
5				<input type="checkbox"/>	<input type="checkbox"/>			<input type="checkbox"/>				<input type="checkbox"/>
6				<input type="checkbox"/>	<input type="checkbox"/>			<input type="checkbox"/>				<input type="checkbox"/>
7				<input type="checkbox"/>	<input type="checkbox"/>			<input type="checkbox"/>				<input type="checkbox"/>
8				<input type="checkbox"/>	<input type="checkbox"/>			<input type="checkbox"/>				<input type="checkbox"/>
9				<input checked="" type="checkbox"/>	<input type="checkbox"/>			<input checked="" type="checkbox"/>	9	ICA mini	offline!	<input type="checkbox"/>
10				<input type="checkbox"/>	<input type="checkbox"/>			<input type="checkbox"/>				<input type="checkbox"/>
11				<input type="checkbox"/>	<input type="checkbox"/>			<input type="checkbox"/>				<input type="checkbox"/>
12				<input type="checkbox"/>	<input type="checkbox"/>			<input type="checkbox"/>				<input type="checkbox"/>
13				<input type="checkbox"/>	<input type="checkbox"/>			<input type="checkbox"/>				<input type="checkbox"/>
14				<input type="checkbox"/>	<input type="checkbox"/>			<input type="checkbox"/>				<input type="checkbox"/>
15				<input checked="" type="checkbox"/>	<input type="checkbox"/>			<input checked="" type="checkbox"/>	15	CCA	HOLD	<input type="checkbox"/>

Figure 67 – Charger Types and Status

DT#	Work Order	Test	Step	In Use	Record	E-Time	Recording Status	Link C.	CID	Charger Type	Charger Status	Auto Config
0				<input type="checkbox"/>	<input type="checkbox"/>			<input type="checkbox"/>				<input type="checkbox"/>
1				<input checked="" type="checkbox"/>	<input type="checkbox"/>			<input checked="" type="checkbox"/>	1	ICA SMC	RESET	<input checked="" type="checkbox"/>
2				<input checked="" type="checkbox"/>	<input type="checkbox"/>			<input checked="" type="checkbox"/>	2	ICA SMI	RESET	<input type="checkbox"/>
3				<input type="checkbox"/>	<input type="checkbox"/>			<input type="checkbox"/>				<input type="checkbox"/>
4				<input type="checkbox"/>	<input type="checkbox"/>			<input type="checkbox"/>				<input type="checkbox"/>
5				<input type="checkbox"/>	<input type="checkbox"/>			<input type="checkbox"/>				<input type="checkbox"/>
6				<input type="checkbox"/>	<input type="checkbox"/>			<input type="checkbox"/>				<input type="checkbox"/>
7				<input type="checkbox"/>	<input type="checkbox"/>			<input type="checkbox"/>				<input type="checkbox"/>
8				<input type="checkbox"/>	<input type="checkbox"/>			<input type="checkbox"/>				<input type="checkbox"/>
9				<input checked="" type="checkbox"/>	<input type="checkbox"/>			<input checked="" type="checkbox"/>	9	ICA mini	RESET	<input type="checkbox"/>
10				<input type="checkbox"/>	<input type="checkbox"/>			<input type="checkbox"/>				<input type="checkbox"/>
11				<input type="checkbox"/>	<input type="checkbox"/>			<input type="checkbox"/>				<input type="checkbox"/>
12				<input type="checkbox"/>	<input type="checkbox"/>			<input type="checkbox"/>				<input type="checkbox"/>
13				<input type="checkbox"/>	<input type="checkbox"/>			<input type="checkbox"/>				<input type="checkbox"/>
14				<input type="checkbox"/>	<input type="checkbox"/>			<input type="checkbox"/>				<input type="checkbox"/>
15				<input checked="" type="checkbox"/>	<input type="checkbox"/>			<input type="checkbox"/>	15	CCA	Not Controlled	<input type="checkbox"/>

Figure 68 – Charger Types and Status

7.2 Intelligent Charger-Analyzers (ICA)

- 7.2.1. Connect a control cable to the Rear Panel of the Charger-Analyzer (connector labeled BTAS)

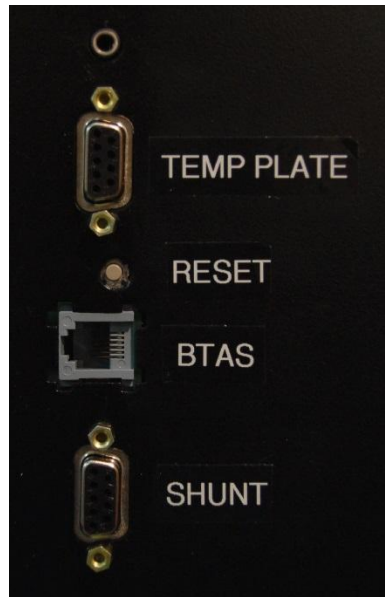


Figure 69 – Rear Panel Connections

- 7.2.2. Enter a Terminal ID number (0 to 15) on the Charger-Analyzer using Option 0 (avoid duplicates on BTAS network)
- 7.2.3. Make sure charger is set to be online using Function 1.
- 7.2.4. Enter a Work Order
- 7.2.5. Verify that the Charger-Analyzer is recognized – refer to [7.1]

7.3 Modified Charger-Analyzers

- 7.3.1. Connect the control cable from the rear of the C-Scan to the control connector on the Charger-Analyzer. See [Figure 70]
- 7.3.2. Verify that the Charger-Analyzer is recognized. Refer to [7.1]



Figure 70 - C-Scan Rear Panel

- 7.3.3. Connect the Shunt connector on the Charger-Analyzer to the shunt input connector on the front of the C-Scan.

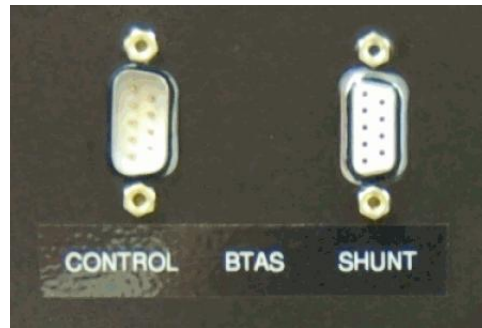


Figure 71 – Control and Shunt connectors on the Charger-Analyzer (CCA)

- 7.3.4. Program the Charger-Analyzer and start it. Verify that it will not run.
- 7.3.5. Start the test in the BTAS16 screen and verify that the Charger-Analyzer is now running (current is flowing). If the system detects that there is no current in the Charger-Analyzer, the program will stop the test in 20- to 30 seconds.
- 7.3.6. The test (recording) will be terminated at the completion of the programmed test in the BTAS16 or if the Charger-Analyzer has stopped (no current-time expired).

8. Water Level

To record the water dispensed into each of the cells, select the Data Terminal (DT#) with the applicable Work Order and open the Tools pull-down.

Select Water Level Interface and make sure that the Work Order Number is displayed in the Work Order window.

8.1 Manual

- Enter the amount of water dispensed into each of the cells in CCs (no decimals)
- When finished, click on Save Data to store the information under the selected work order.
- Close the Water Level screen

8.2 Automatic

- Set the MasterFiller to be ready to communicate with BTAS.
- Click Acquire for BTAS to interrogate the MasterFiller.
- Verify that the data received is proper (edit manually if needed)
- Click on Save Data to store the information under the selected work order.
- Close the Water Level screen

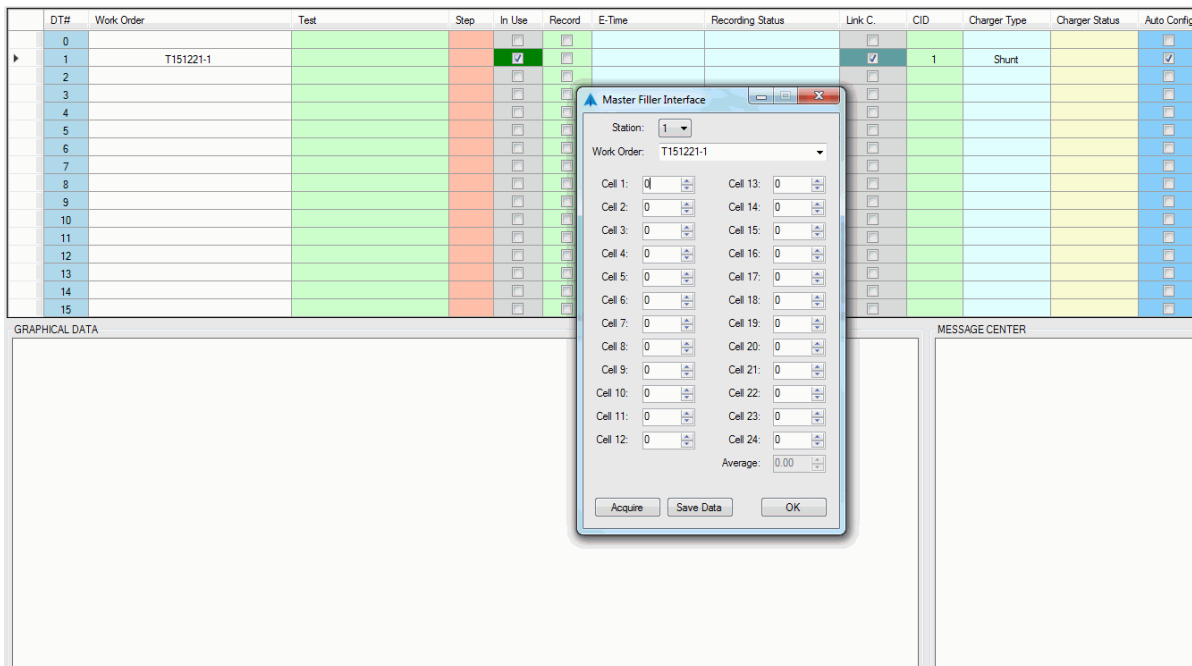


Figure 72 – Main Screen with Water Level sub Screen

9. Calibration

There are no adjustments to perform on any part of this system. A verification of performance, however, is to be performed to determine if the system is functioning correctly.

In case of uncorrectable situations, contact the distributor or manufacturer for applicable repairs.

Perform at least once per year or at any time, to determine the integrity of the system.
(See Verification of Performance)

10. Verification of Performance

10.1 Cell Simulator

- 10.1.1. The **Cell Simulator** generates simulated cell voltages, battery voltages, currents and temperatures as needed for system test and verification.
- 10.1.2. The stair case pattern and resulting screen colors are used to quickly determine if all cell channels are reading correctly without the need for actual voltage measurements.
- 10.1.3. All numerical information is made available at the right hand window of the Main Screen and can be printed to have a record of it. Do a right click and select to print the data,
- 10.1.4. The **Cell Simulator** can be set to simulate a 20 cell battery, two 11 cell batteries, three 7 cell batteries or display all 24 cell channels.
- 10.1.5. In addition, front panel switches can be used to simulate the Charger-Analyzer connected/disconnected and with power-on/power-off.
- 10.1.6. Simulation of 24-cells (default simulation mode)

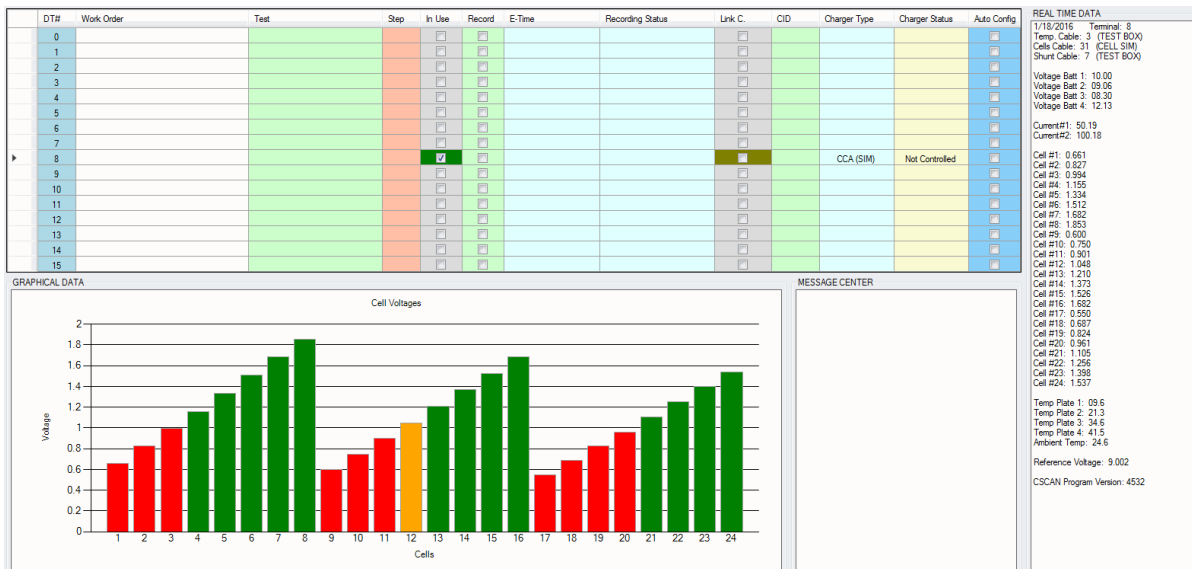


Figure 73 - Cells simulation for a 24 Cells

10.1.7. Simulation of two 11-cell batteries

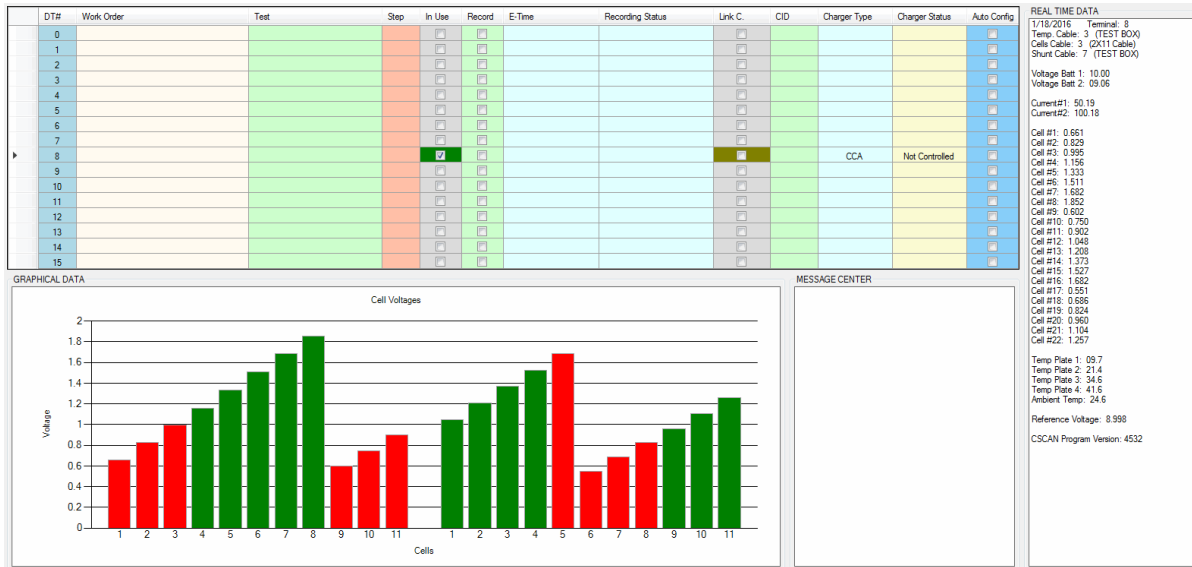


Figure 74 - Cells simulation for two 11 cell batteries

10.1.8. Simulation of one 20 cell battery

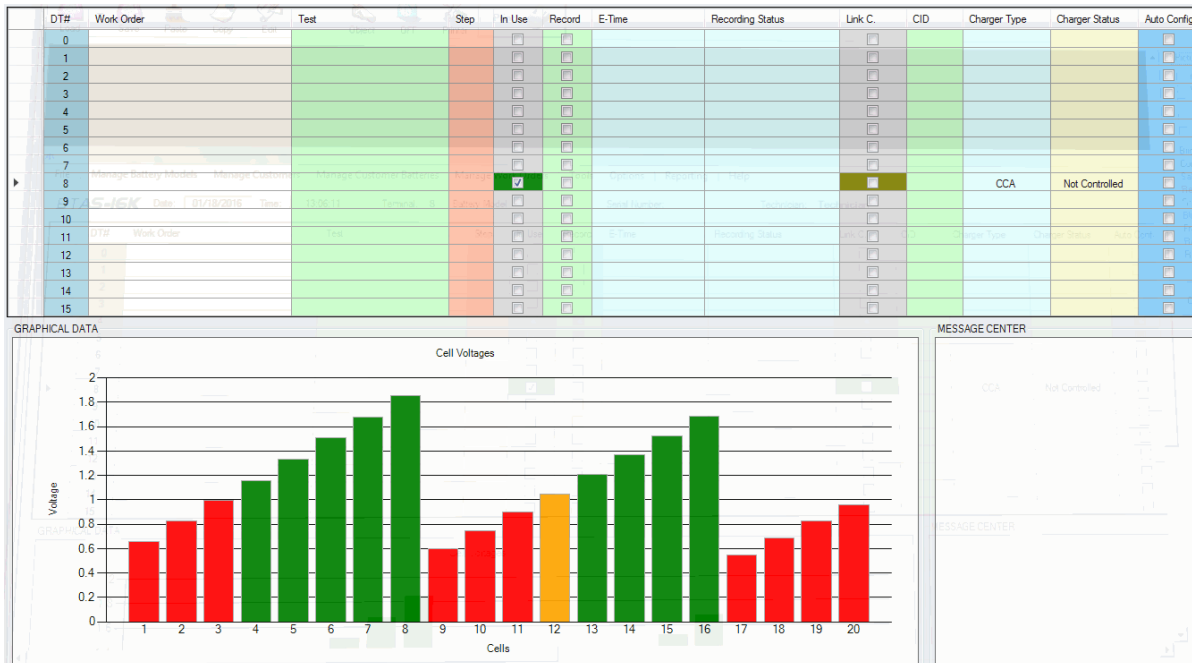


Figure 75 - Cells simulation for one 20 cell battery

10.1.9. Simulation of one 21 cell battery

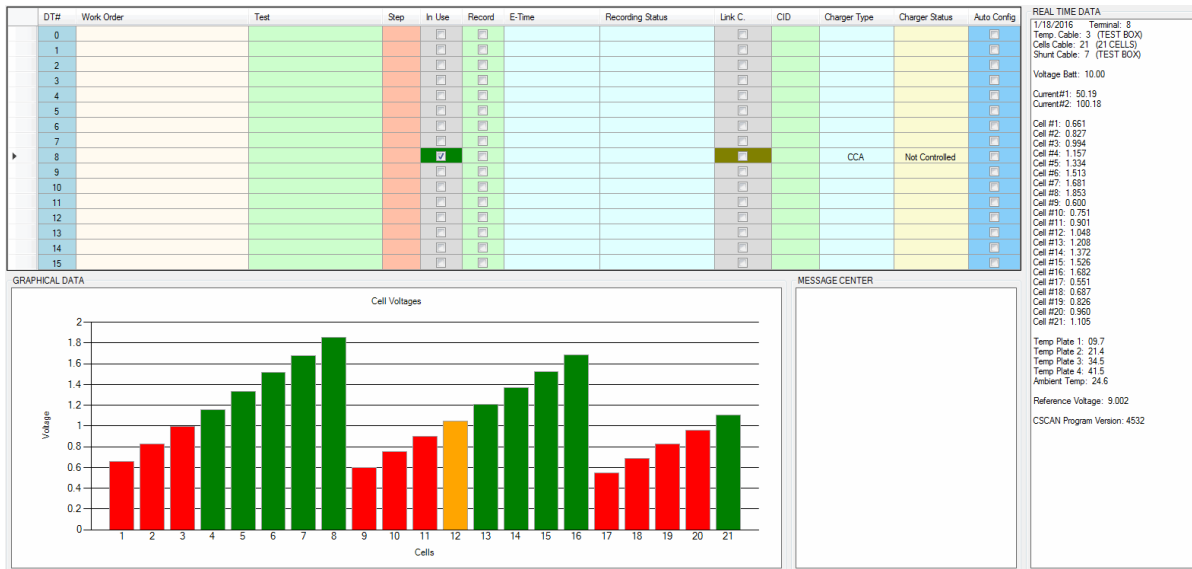


Figure 76 - Cells simulation for one 21 cell battery

10.1.10. Cable simulation Selector Switch



Figure 77 - Cable Code Switch (#1 shown)

Cable Codes:

- 1 – 20 Cells
- 2 – 19 Cells
- 3 – 2x11 Cells
- 4 – 3x7 Cells
- 10 – Four Batteries
- 21 – 21 Cells
- 22 – 22 Cells
- 31 – 24 Cells (Test)

- 10.1.11. Charger-Analyzer Simulation (for controllable, non-intelligent equipment)
Refer to the switches as shown in Figure 78



Figure 78 - Cell Simulator Front Panel Switches

- CON simulates that the Charger-Analyzer Control Cable is connected
- PWR simulates that the Charger-Analyzer is turned ON
- TYPE is not used at this time

10.2 External Measurements

Using external measurements of voltage and current for system test and verification

- 10.2.1. Perform an AS RECEIVED test on a battery using an external voltmeter and compare the internal system readings with the external measurements.
- 10.2.2. Perform a charge or discharge test using an external ammeter or shunt and compare the internal system readings with the external measurements.
- 10.2.3. For any of the tests print a Data Snapshot for record purposes.

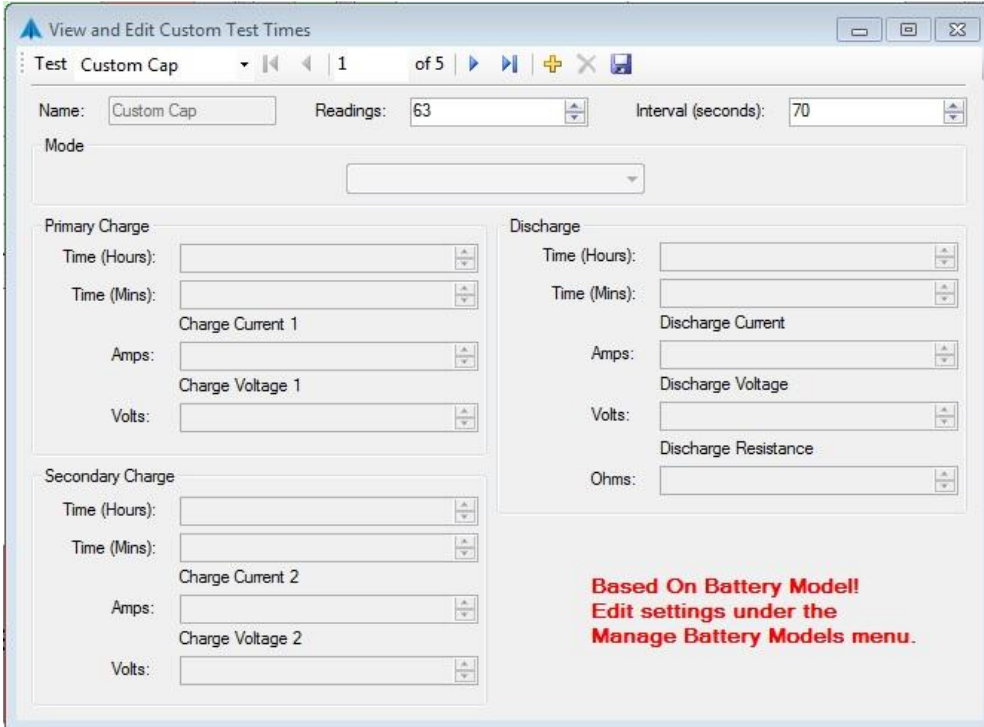
11. Tools

11.1 Edit Custom Test Settings

For tests requiring time periods other than what is available in the standard list, and settings that are also non standard, the Edit Custom Test Settings dialog can be used.

Each battery model has a Custom Cap and 3 Custom Charge tests. The length and recoding interval of those tests can be changed using this dialog.

Completely custom tests can also be created using this dialog, which will also program the charger as set here.



View and Edit Custom Test Times

Test Custom Cap 1 of 5

Name: Custom Cap Readings: 63 Interval (seconds): 70

Mode

Primary Charge

Time (Hours): Time (Mins): Charge Current 1 Amps: Charge Voltage 1 Volts:

Secondary Charge

Time (Hours): Time (Mins): Charge Current 2 Amps: Charge Voltage 2 Volts:

Discharge

Time (Hours): Time (Mins): Discharge Current Amps: Discharge Voltage Volts: Discharge Resistance Ohms:

**Based On Battery Model!
Edit settings under the
Manage Battery Models menu.**

Figure 79 - Screen to edit custom tests

11.2 Setup Combination Tests

Combination tests can be created to sequence a series of standard tests or custom tests together using this dialog. Select the number of steps and then populate the test step pull down boxes.

The combination tests will then appear as an option by clicking on the Tests column in the main grid and selecting the Combination Tests drop down.

Combination tests will only work with intelligent chargers when Auto Config is enabled.

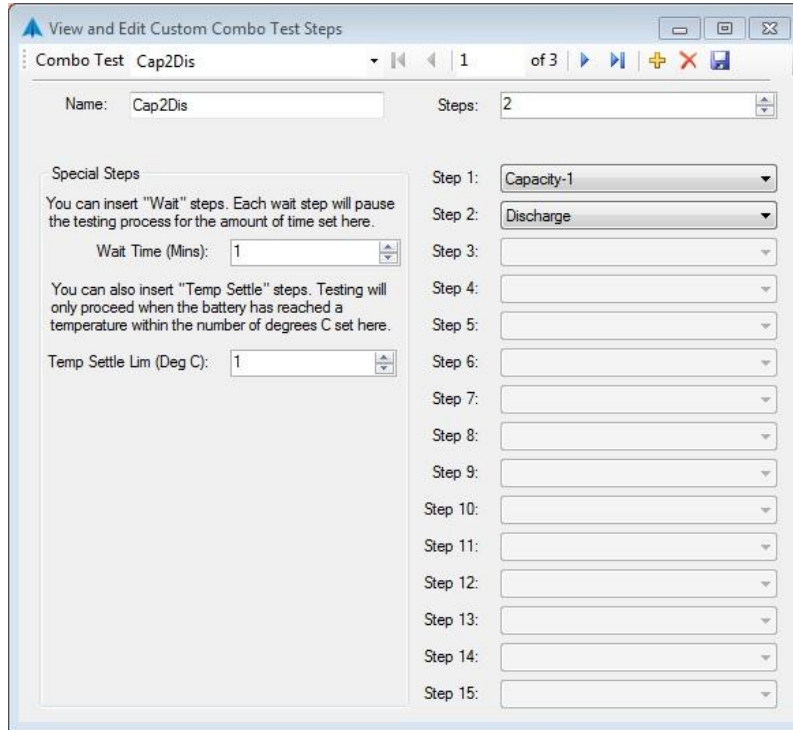


Figure 80 - Screen to edit custom tests

11.3 Advanced Test Settings

Advanced Test Settings are designed to allow further customization of the use of the BTAS system.

Advanced Test Settings

- 11.3.1. Declining Cell Voltage During Charge Test: This test will look for declining cell voltages during charging tests and stop the charge operation if a cell's voltage begins to reverse. The Declining Cell Voltage Threshold is the amount of decline in voltage that the program needs to see three consecutive periods. The sample period can also be set using the DCV Sample Period option.
- 11.3.2. Cell Balance Test After Capacity: Displays a plot of the ending cell voltages at the end of any test with the word "capacity" in its name. This allows the operator to quickly determine if the cell voltages remained balanced during the test. The Voltage Variability Threshold option controls where upper and lower cutoffs (indicated with red horizontal lines) are displayed in the plot.
- 11.3.3. C Scan Errors To Allow Before Dropping C Scan: This option allows for C Scan com errors to be ignored by the program. This is a temporary solution for BTAS networks that are operating poorly.
- 11.3.4. Indicate When Cells are Below 0.5V in Discharge by Coloring Light Green: This option colors deeply discharged cells light green when a discharge test is being run.
- 11.3.5. Allow Zero Current Tests: This option suppresses the zero current test fault.
- 11.3.6. Main Grid Rows to Show: This option allows the user to suppress grid rows. This option is useful when the BTAS is being used with less than the maximum 16 C Scans.
- 11.3.7. Show C-Scan and IC Debug Data: This option display additional information about the C-Scan and Intelligent Chargers in the Real Time Data window. Not recommended for normal use.
- 11.3.8. Interpolate Time in Test Reports: This option allows for a more precise time to be indicated on test reports as to when a cell failed using a linear interpolation.
- 11.3.9. End test as soon as END is detected rather than indicate a Fault: This option allows for the system to stop a test when the connected charger indicates it has reached the end of the test without indicating a fault.
- 11.3.10. Add One Min to Programmed Test Time When Using ICA with Auto Config: This option allows for an additional minute to be added to all tests so that there are no timing mismatch issues with the software and the charger. This option is typically not required.

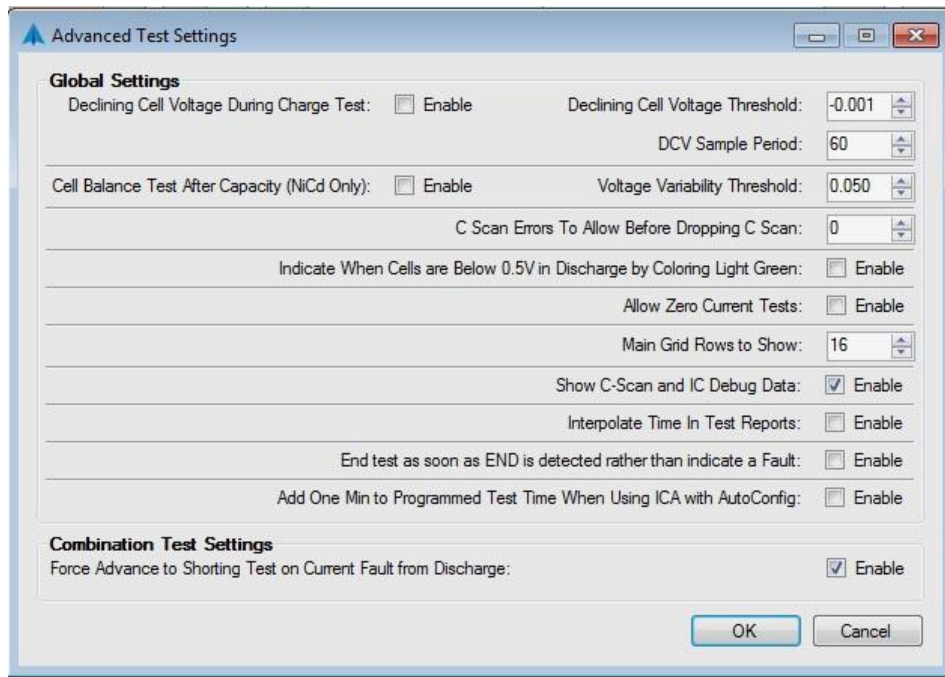


Figure 81 - Advanced Test Settings

11.4 Technicians

Use Edit Technicians to add, edit or delete the names of the system operators

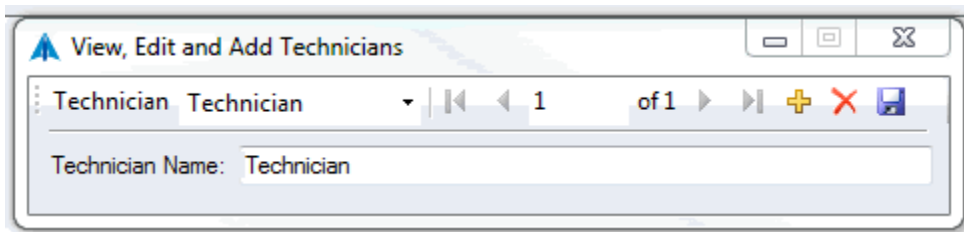


Figure 82 - Screen to enter/edit the names of the system operators

12. Installation

12.1 Power (mains):

- 12.1.1. Provide backed-up (UPS) power for the computer, peripherals and BTAS devices.
- 12.1.2. Insure that there is a solid earth ground connection between the charger analyzers and the BTAS.
Note: a faulty earth ground will result in unstable current and corrupted communication between the computer and the C-Scans and Charger-Analyzers.

12.2 Computer

- 12.2.1. Install and test the computer and its peripherals in accordance to the instructions from the computer manufacturer.
- 12.2.2. Install the BTAS program per the instructions provided with and within the installation CD.

12.3 Connections

- 12.3.1. Connect the BTAS devices and test per section [2]

12.4 Test

- 12.4.1. Perform a Verification of Performance to determine the integrity of the installation, per section [10]

12.5 System Installation Pictures

Typical connections in a BTAS16 system

12.5.1. Data Interface and C-Scan

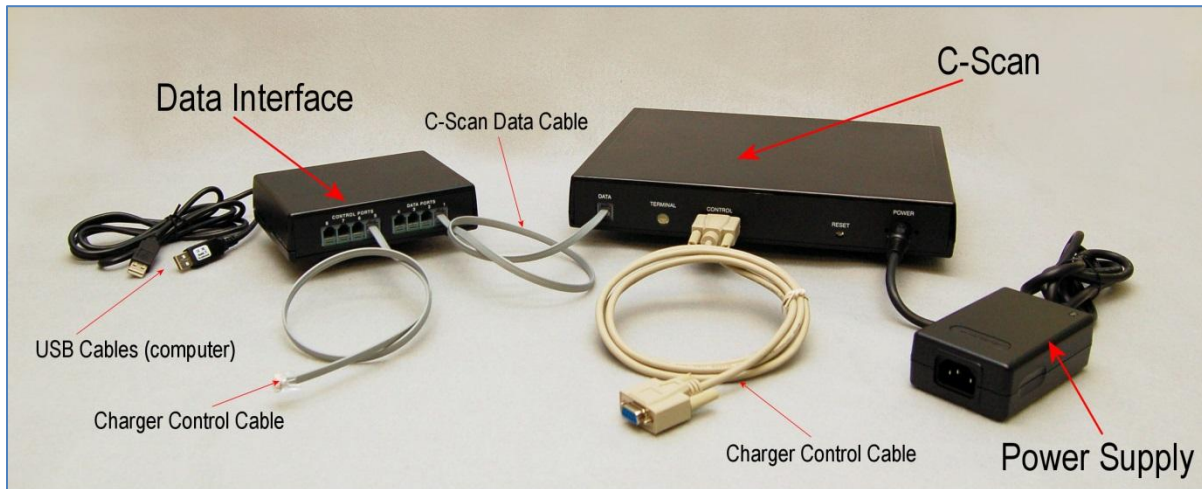


Figure 83 – Data Interface and C-Scan

12.5.2. Cell Simulator and C-Scan

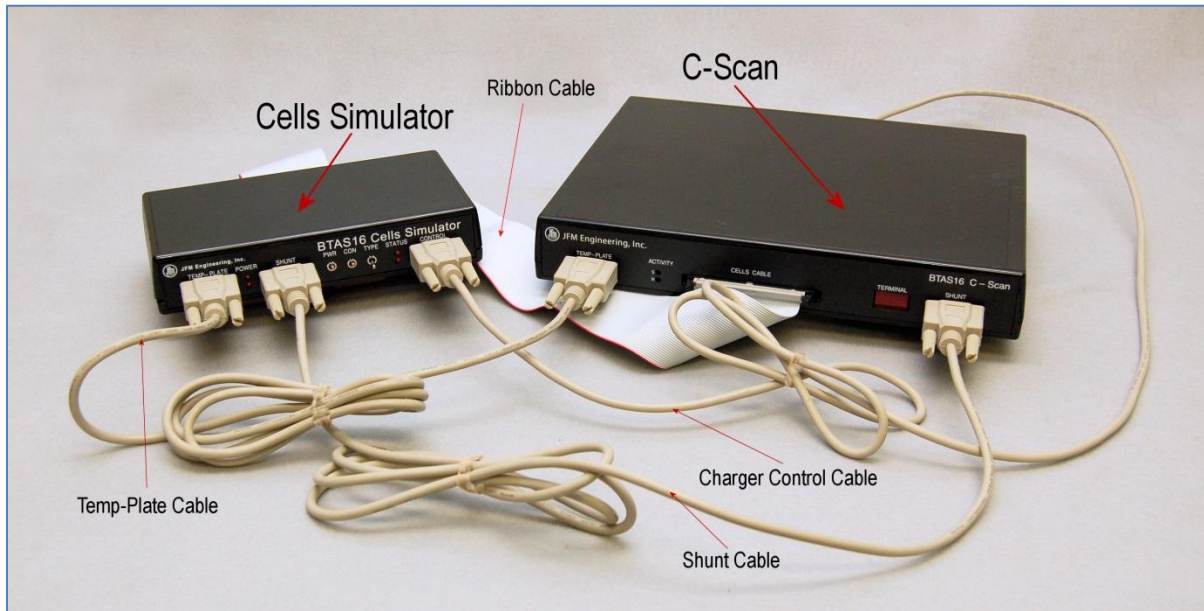


Figure 84 – Cell Simulator and C-Scan

12.5.3. Temp-Plate and C-Scan

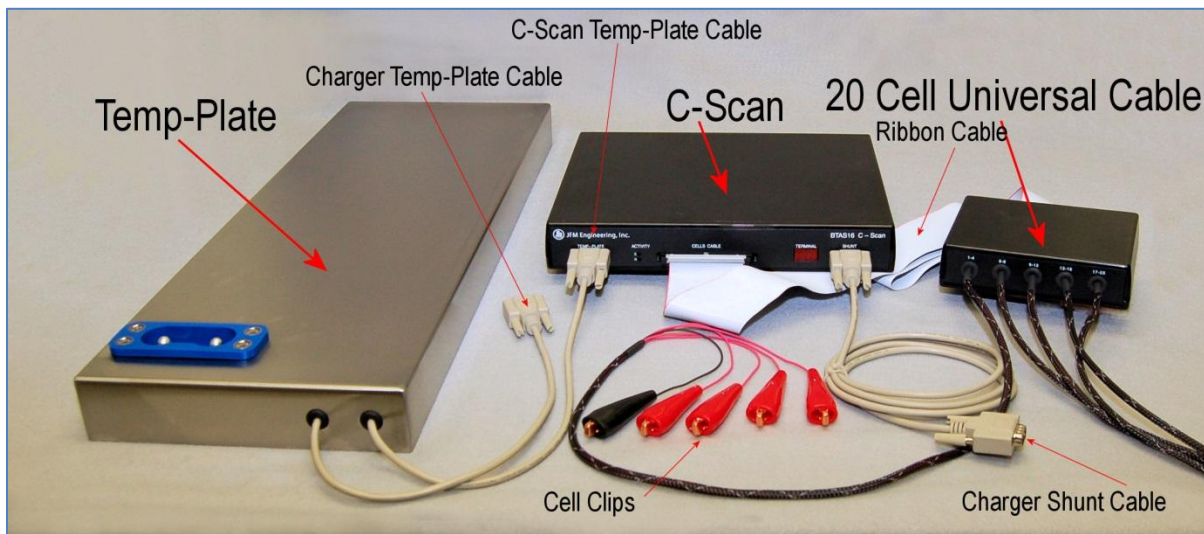


Figure 85 – Temp-Plate and C-Scan

12.5.4. **Charger-Analyzer, Data Interface, C-Scan and Temp-Plate**

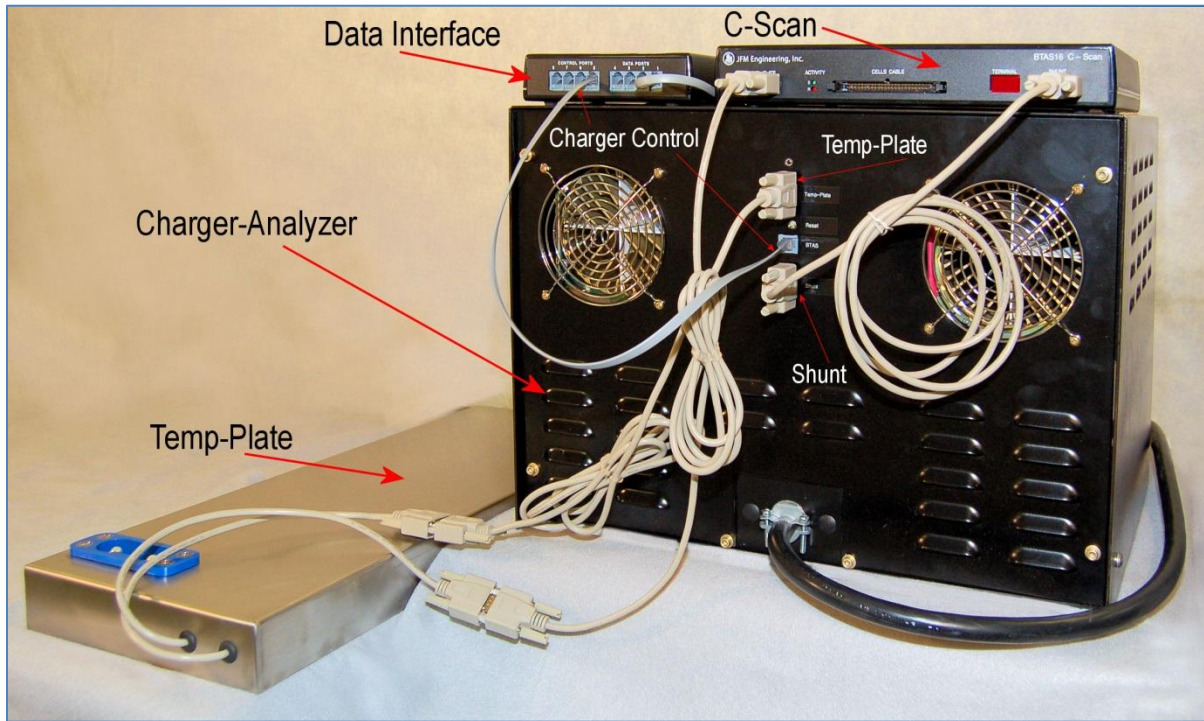


Figure 86 – Charger-Analyzer, Data Interface, C-Scan and Temp-Plate

13. System Maintenance

13.1 Data Files

Data Files are located in the folder %appdata%\BTAS16_DB. The name of the file is BTS16NV.mdb

13.2 Data File Backup

For best safeguard from data losses, backup data on a daily basis.

In case of heavy daily workload, backup data more than once a day.

- 13.2.1. Click on FILE
- 13.2.2. Click on Database Operations
- 13.2.3. Click on Backup Database
- 13.2.4. The program will respond by asking you where you want to back up the database.
- 13.2.5. Alternate File Backup Method
- 13.2.6. Copy and store the file BTS16NV.mdb from %appdata%/BTAS16_DB. Rename the file adding the date of the copy.
- 13.2.7. Copy the Data onto CDs and store in a safe place.

13.3 Data File Restore

- 13.3.1. Click on FILE
- 13.3.2. Click on Database Operations
- 13.3.3. Click on Restore Database
- 13.3.4. The program will respond by asking you where you want to backup the current database.
- 13.3.5. The program will then ask you where the database file you want to restore is located.

13.4 Viewing Data Files

The content of the data files can be viewed using MS Access

Caution: Altering the file structure or contents could render the system unusable.

13.5 Software Location and Updates

The program will automatically update itself through the internet when a new version of the program is released. It is recommended that you keep the computer you are running the program on connected to the internet. Contact JFM in the event that you do not have an internet connection and would like to manually update the program.

14. Troubleshooting

14.1 List of common operational issues

#	Problem	Probable Cause	Solution
14.1.1	C-Scan Terminal Number not visible	<ul style="list-style-type: none"> No Power No communication with the computer 	<ul style="list-style-type: none"> Connect power Press the RESET button in the rear panel of the C-Scan
14.1.2	C-Scan Scan Indicator not turning on (not blinking)	<ul style="list-style-type: none"> C-Scan data cable not plugged-in Program not running Data Interface with no power or not connected. 	<ul style="list-style-type: none"> Connect the data cable in the back of the C-Scan Start the program Verify that power is on for the Interface and that the Interface is connected to the Computer.
14.1.3	C-Scan Reading indicator not turning on (not blinking)	<ul style="list-style-type: none"> Data Terminal not selected in the main screen 	<ul style="list-style-type: none"> Click the corresponding IN USE check-box
14.1.4	IN USE box is RED	<ul style="list-style-type: none"> C-Scan not responding. 	<ul style="list-style-type: none"> See [3.2] Verify that the data cables are properly connected all the way to the Interface Box. Temporarily connect a different C-Scan Terminal and determine if the problem is with the cabling or with the original terminal. Reset or Disconnect and re-connect power C-Scan defective
14.1.5	No battery cell readings	<ul style="list-style-type: none"> Crown or Cell Cables not connected to the battery. Ribbon Cable not connected to the C-Scan 	<ul style="list-style-type: none"> Connect Crown or Cell Cables to the battery. Connect Ribbon Cable to the C-Scan
14.1.6	One or more cells not reading correctly when using a crown	<ul style="list-style-type: none"> Improper contact with the cell link. 	<ul style="list-style-type: none"> Verify that the link in the battery and the spring loaded contact in the Crown are free from corrosion. Clean or replace links and contacts as necessary
14.1.7	Cannot fit the crown on to the battery	<ul style="list-style-type: none"> Crown shape, size, or configuration not for the battery. Attempting to fit the crown backwards. Battery can is distorted 	<ul style="list-style-type: none"> Use a crown made for the battery. The proper orientation of the crown is with the ribbon cable opposite to the battery connector. Straighten up the distortion in the battery can until the crown fits the battery properly.
14.1.8	One or more cells not reading correctly when using the Cables with Clips	<ul style="list-style-type: none"> Clips out of sequence or reversed Corroded clip Broken connection 	<ul style="list-style-type: none"> Verify that clips are placed in the correct order (cell #1 is the most negative one). Clean or replace the clip Repair the connection

14.1.9	The number of cells reported is not consistent with the number of cells in the battery when using the Cables with Clips.	<ul style="list-style-type: none"> • Cable not consistent with the battery type. 	<ul style="list-style-type: none"> • Replace with the cable wired for the specific number of cells. (Verify the type of cable reported in the top section of the numerical results screen).
14.1.10	Recording stops after 20-30 seconds	<ul style="list-style-type: none"> • No current is detected – check for the “No Current” error message. 	<ul style="list-style-type: none"> • Verify that the Shunt Cable is connected to the C-Scan.
14.1.11	No temperature data	<ul style="list-style-type: none"> • Temp-Plate Cable not connected to the C-Scan 	<ul style="list-style-type: none"> • Verify that the Temp-Plate Cable is connected.
14.1.12	No control of Charger-Analyzers.	<ul style="list-style-type: none"> • Control Cable not connected between the Charger-Analyzers and the Data Interface or between the Charger-Analyzer and the C-Scan. • Link Charger not selected 	<ul style="list-style-type: none"> • Verify that the Control Cable is connected. • Verify that Link Charger is checked
14.1.13	(Removed)	<ul style="list-style-type: none"> • --- 	<ul style="list-style-type: none"> • ---
14.1.14	The number of recordings is less than expected	<ul style="list-style-type: none"> • Recording turned off prematurely. • Charger-Analyzer terminated prematurely (no current detected) • Charger-Analyzer terminated ahead of the program. 	<ul style="list-style-type: none"> • Check for proper system operation. • Check the programming in the Charger-Analyzer • Program an additional minute in the Charger-Analyzer
14.1.15	The colors of the Cells Bar Graph in the Main Screen change color after a test is finished.	<ul style="list-style-type: none"> • The Cells Bar Graph in the Main Screen is real time. Voltages in a battery at rest will change (If it was being discharged, the cell voltages will go up and vice-versa). 	<ul style="list-style-type: none"> • The color coding in the Bar Graphs is always in accordance to the test requested (or just finished). • For true end-of-test readings, check the display through the Graphs Screen.
14.1.16	Current readings are unstable or different at the BTAS screen but are stable at the charger.	<ul style="list-style-type: none"> • Improper earth grounding between the charger(s) and the BTAS computer. 	<ul style="list-style-type: none"> • Verify/rectify the integrity of the earth grounding between the charger(s) and the BTAS computer.

15. Parts List

List of parts used in the BTAS16 System

15.1 Data Interface – P/N 9895516003

Used for the computer to communicate with C-Scans (data transfer) and Charger-Analyzers (control).



15.2 Data Hub – P/N 9895516001 (optional)

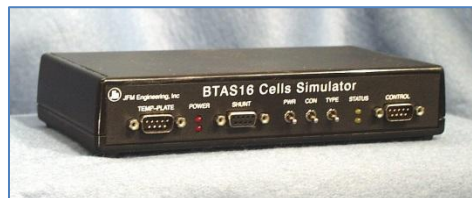
Used to expand the Data Interface with more than four C-Scans or more than four Intelligent Charger-Analyzers, or to simply facilitate the routing of Data and Control Cables.



15.3 C-Scan – P/N 9895202001



15.4 Cell Simulator – P/N 9895202301

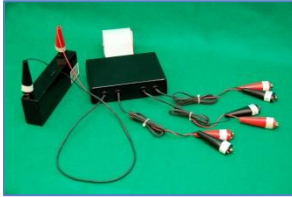


15.5 20 Cell Cable with Clips (large) – P/N 9895202L20**15.6 External Shunt - P/N 9895202803 (Charger-Analyzer dependent)**

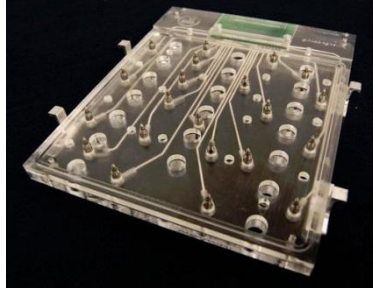
Used with Charger-Analyzers that are not BTAS ready (“C” modification) or for any other type Charger-Analyzer.

**15.7 Four Battery Cable – P/N 9895202804 (optional)**

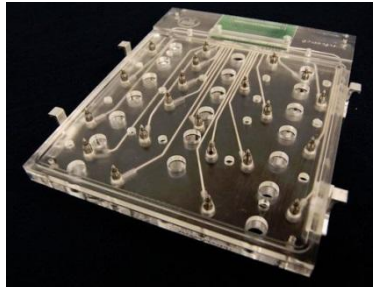
Note: battery shown for reference only

**15.8 20 Cell Cable with Clips – P/N 9895202M20****15.9 21 Cell Cable with Clips – P/N 9895202L21**

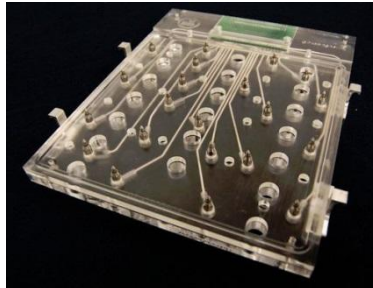
- 15.10 2x11 Cell Cable with Universal Clips – P/N 9895202D11 (optional)**
- 15.11 3x7 Cell Cable with Universal Clips – P/N 9895202307 (optional)**
- 15.12 Data Cable 6 (6 conductor cable with telephone modular plugs; 12 ft) – P/N 6079M0D612**
- 15.13 DB9 Data Cable 9 (9 conductor cable with DB9 plugs; 6 ft) – P/N 6079DB9MF6**
- 15.14 Crown for SAFT 20 Cell Batteries “Universal” Configuration) – P/N 9895203C01**



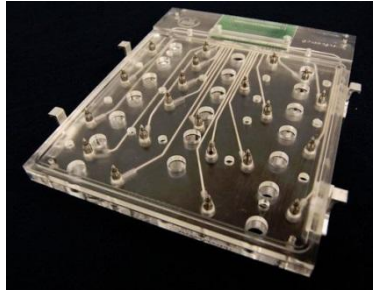
- 15.15 Crown for SAFT 5317, 21 Cell Batteries – P/N 9895203C02**



- 15.16 Crown for SAFT 4579, 20 Cell Batteries – P/N 9895203C03**



15.17 Crown for SAFT 276CH, 19 Cell Batteries – P/N 9895203C05



16. GLOSSARY

- **Battery Management Software:** The program installed in a computer to run the Battery Management System
- **Battery Management System:** The Battery Management Software and the associated hardware interfaces that effect the measurement of parameters for batteries under test.
- **Battery Manual:** General Technical information provided by a manufacturer applicable to a series of batteries.
- **Battery Test Profile:** A specific group of parameters for a specific type of test (i.e., Time, Current and Voltage).
- **Battery Test System:** The Charger-Analyzer(s) and the Battery Management System that enable a Battery Test Facility to operate in an automated mode.
- **BTAS16:** A computerized Battery Management System (manufactured by JFM Engineering).
- **CCA:** Controllable Charger-Analyzer. A Charger-Analyzer that can be started and stopped by the BTAS software (Superseder IIIC, MasterCharger LXC, SuperCharger60C, manufactured by JFM Engineering).
- **Capacity Test:** Test performed to determine if a battery can deliver the advertised, specified or required amount of current.
- **Cell Imbalance:** The difference of voltage from cell to cell at the end of a Capacity Test or Charge.
- **Charge Acceptance:** The capability of the cells to transform the incoming current into charge stored in the plates.
- **CMM:** Component Maintenance Manual - Technical information provided by a manufacturer for a specific battery.
- **Constant Current:** As applicable to a charge or discharge test, a current that remains within a few percent of a center value, independent of battery voltage, temperature or line voltage (mains). This is the preferred charge/discharge method for Nickel-Cadmium batteries.
- **Constant Voltage:** As applicable to a charge test, a voltage that remains within a few percent of a center value. In this case, as the battery is charged the current is automatically decreased by the charger to maintain the voltage at the required level. This is the typical charge method for Lead-Acid batteries. Note that in the aircraft, the charge method is constant voltage, regardless of the type of batteries used.
- **C-SCAN:** A Data Acquisition Terminal (part of the BTAS16 manufactured by JFM Engineering).
- **Deep Cycle:** As applicable to Nickel-Cadmium batteries, the process of discharge to zero for each of the cells, done to equalize the cells.
- **Electrolyte Level Test:** As applied to Nickel-Cadmium cells that have a vent cap, the process of verifying the level of the electrolyte and the addition of distilled water as required (Note that this test is performed only at the end of a charge cycle).
- **Full Discharge:** Constant Current Discharge with no voltage limit (discharged to the lowest possible level first by the Charger-Analyzer and finished by resistors and/or shorting clips).
- **ICA:** Intelligent Charger-Analyzer. A Charger-Analyzer that is microprocessor driven and can communicate with the BTAS16 software for parameter programming and control (this is specific to equipment manufactured by JFM Engineering)..

- Lead-Acid: Chemistry system of batteries used for most stand-by applications and for applications demanding less severe discharge currents (as compared with Nickel-Cadmium).
- Main Charge: As applicable to Nickel-Cadmium batteries, the C/2 (or 1C) current that provides 100% of the A-Hr rating.
- Nickel-Cadmium: Chemistry system of batteries as used in aviation and other heavy duty applications.
- Overhaul: The process of disassembly of all interconnections, cleaning/replacement of interconnecting hardware, removal of cells and cleaning of cells and the interior of the battery. This is applicable to batteries that are made up from an interconnection of multiple cells.
- Reserve Voltage: The difference between the Capacity Test Voltage and the minimum voltage for each of the cells.
- SLA: Sealed Lead-Acid Battery
- Temp-Plate: A plate used to measure the temperature of batteries under test (this is specific to equipment manufactured by JFM Engineering).
- Thermal Runaway: Destructive condition under constant voltage charging where one cell fails and heats up and causes all other cells to fail by the transmission of heat from one cell to the next. The drop in internal voltage causes an increase in charge current that intensifies the heating, thus accelerating the process.
- Topping Charge: As applicable to Nickel-Cadmium batteries, the C/10 charge current that provides 40% of the A-Hr rating (after the 100% provided by the Main Charge).
- VRLA: Valve Regulated Lead-Acid Battery
- Water Leveling: The process of bringing the electrolyte level to the prescribed level by the addition of distilled water (or de-ionized).

17. DISCLAIMER

17.1 Qualified Personnel

The BTAS16 is a precision system intended to be operated by personnel qualified in the servicing of aircraft, industrial or medical batteries.

17.2 JFM Engineering's responsibility

JFM Engineering's responsibility is limited to the repair/replacement of any malfunctioning part of the system (not responsible for any losses incurred from the usage of the system).

17.3 User's Responsibility

- 17.3.1. It is the user's responsibility to verify suitability in the intended application.
- 17.3.2. It is the user's responsibility to verify the performance of the instruments and to operate and maintain it in accordance with the above given instructions.
- 17.3.3. It is the user's responsibility to test batteries in accordance to the instructions and recommendations of the manufacturers of the batteries.
- 17.3.4. It is the user's responsibility to operate the Instrument within standard safety procedures applicable to the operation of a Battery Test Facility.
- 17.3.5. It is the user's responsibility to install power receptacles and wiring in accordance with local wiring codes.
- 17.3.6. It is the user's responsibility to observe all necessary precautions and to be equipped with personal protective equipment when working with batteries to avoid injury due to electrolyte splashing, short circuits with tools and to avoid injury due to the size and weight of the batteries.
- 17.3.7. It is the user's responsibility to provide backup power (UPS) for the Computer and the Data Acquisition Terminals.
- 17.3.8. It is the user's responsibility to backup data files to safeguard against data losses due to hardware (Computer) malfunction.
- 17.3.9. It is the user's responsibility to verify the integrity of the performance of this instrument in accordance with the instructions of Section [10].
- 17.3.10. It is the user's responsibility to install the equipment in accordance with the instructions of section [12].

18. REVISION INDEX

REV	DATE	SOFTWARE	NOTES
K0.14	1 March 2016	6.0.1	Preliminary
K1.01	26 June 2017	6.0.2	With additional information on Advanced Test Setting, Custom Test Setting and Combination Test Settings.

19. Notes